

SIDEWALK RAMP IMPROVEMENTS

ON

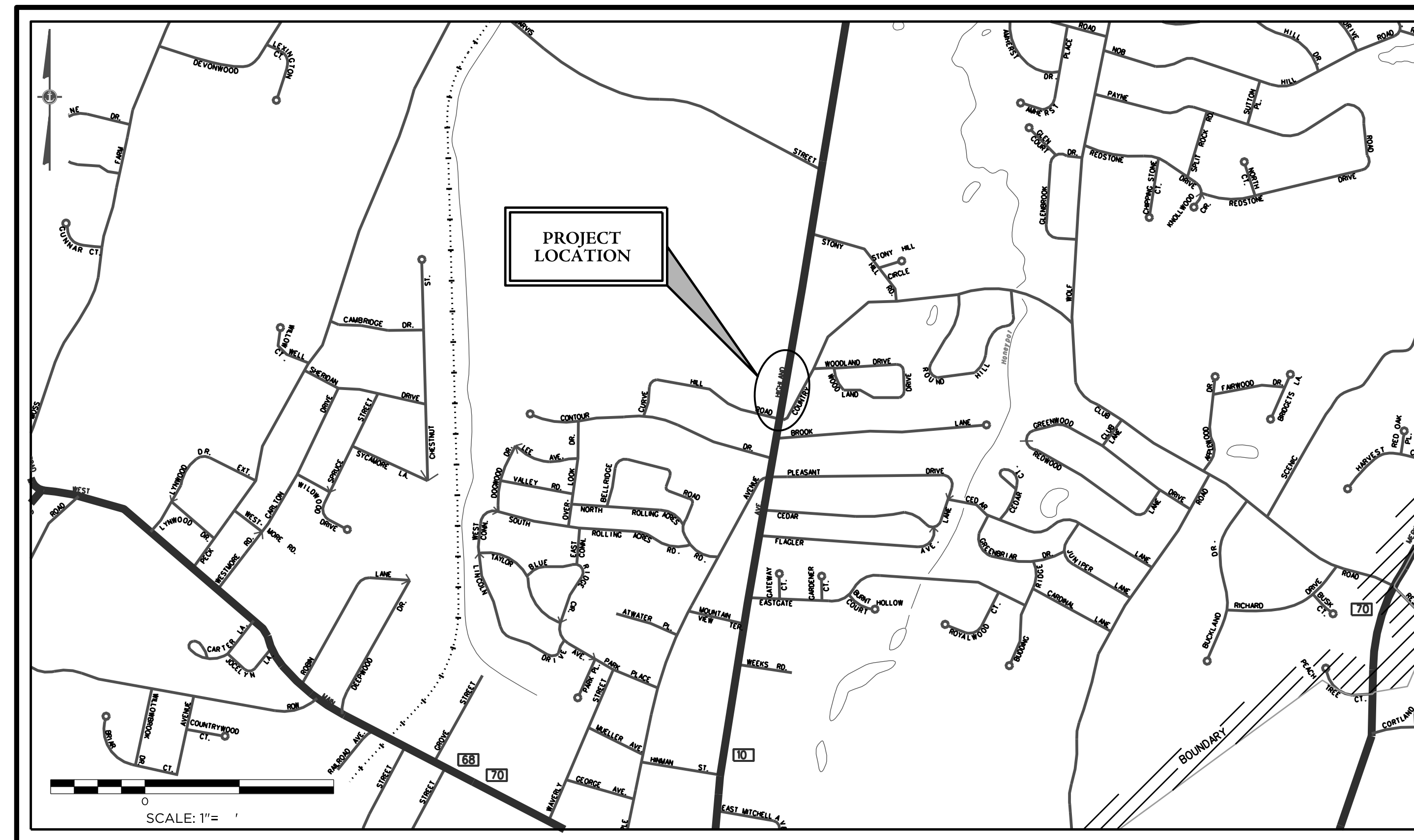
HIGHLAND AVENUE (CT ROUTE 10)

CHESHIRE, CT

PREPARED FOR

TOWN OF CHESHIRE

84 MAIN STREET
CHESHIRE, CT 06410



LOCATION MAP
SCALE: 1" = 1'

LIST OF SHEETS

DATE: 07/27/22
REVISED:

LAYOUT & GRADING PLAN	1
LAYOUT & DETAILS PLAN	2
TRAFFIC CONTROL SIGNAL PLAN (DATED JUNE 2022)	3
TRENCHING, BACKFILLING & ELECTRICAL CONDUIT DETAIL	4
TRAFFIC CONTROL FOUNDATIONS	5
EXISTING TRAFFIC SIGNAL CONTROL PLAN - FOR INFORMATION ONLY	

TITLE LIST OF CT DOT STANDARD SHEETS

TR-1102_01	PEDESTALS, PEDESTRIAN SIGNALS
TR-1107_01	PEDESTRIAN PUSH BUTTONS
TR-1210_04	PAVEMENT MARKING LINES AND SYMBOLS
TR-1210_08	PAVEMENT MARKINGS FOR NON FREEWAYS
TR-1220_01	SIGNS FOR CONSTRUCTION AND PERMIT OPERATIONS
TR-1220_02	CONSTRUCTION SIGN SUPPORTS AND CHANNELIZING DEVICES
	ENCROACHMENT PERMIT - PAVEMENT REPAIR

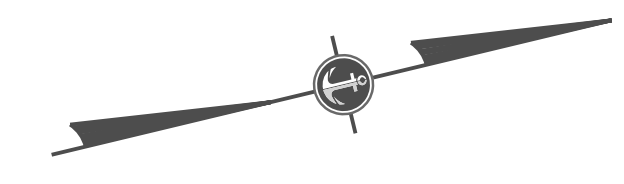
PREPARED BY:



41 Sequin Drive
Glastonbury, CT 06033
Phone: (860) 633-8770
Fax: (860) 633-5971
www.bandlct.com

Civil Engineering • Environmental Consulting • Land Surveying • Construction Management





707 HIGHLAND AVE
N/F
RUTH A CALVO

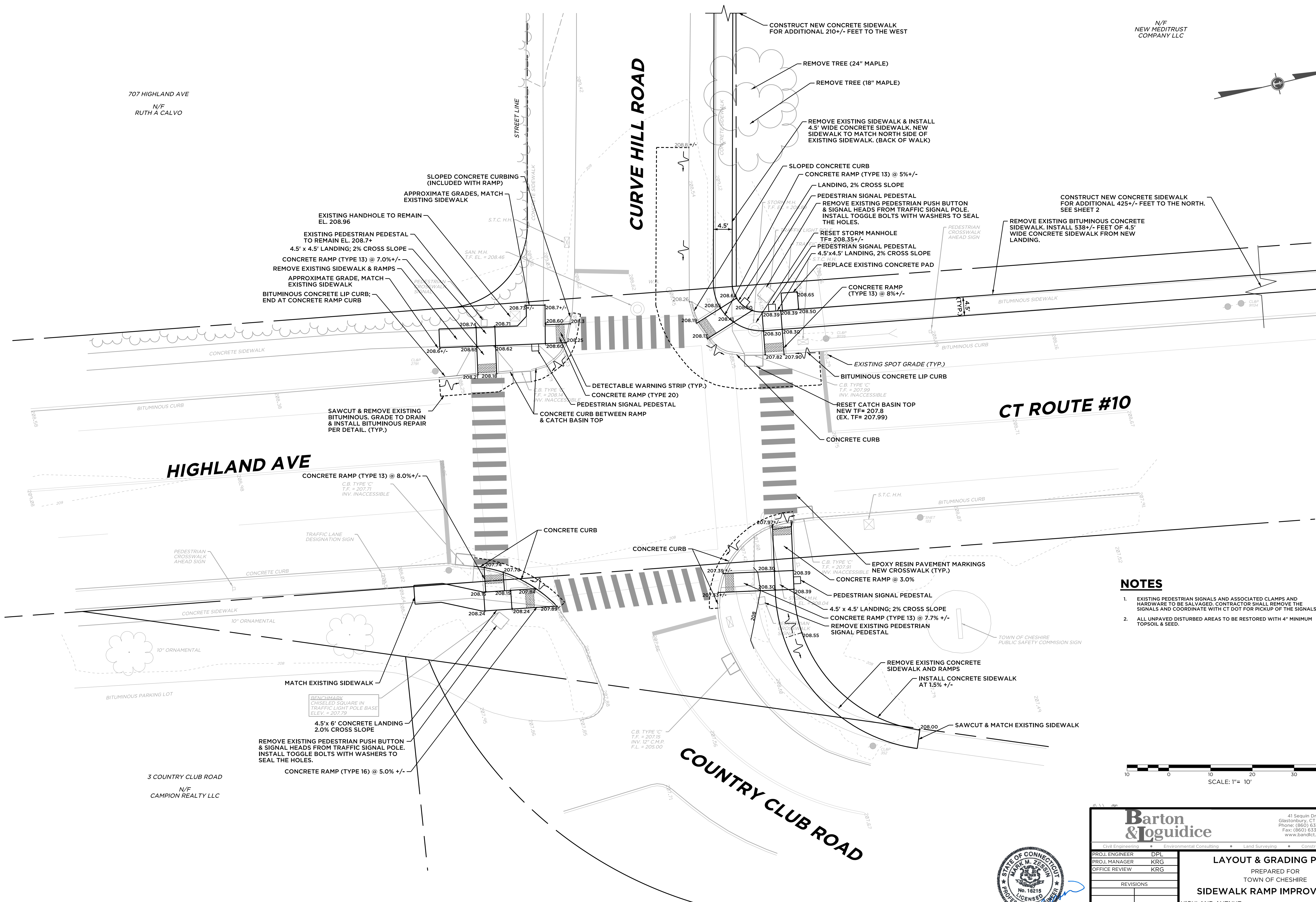
CURVE HILL ROAD

CT ROUTE #10

HIGHLAND AVE

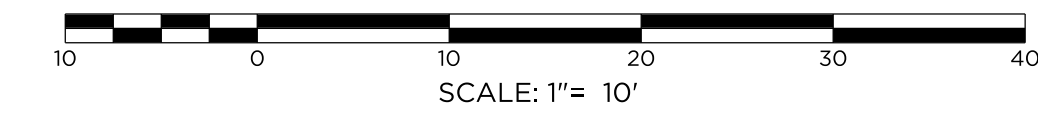
COUNTRY CLUB ROAD

3 COUNTRY CLUB ROAD
N/F
CAMPION REALTY LLC

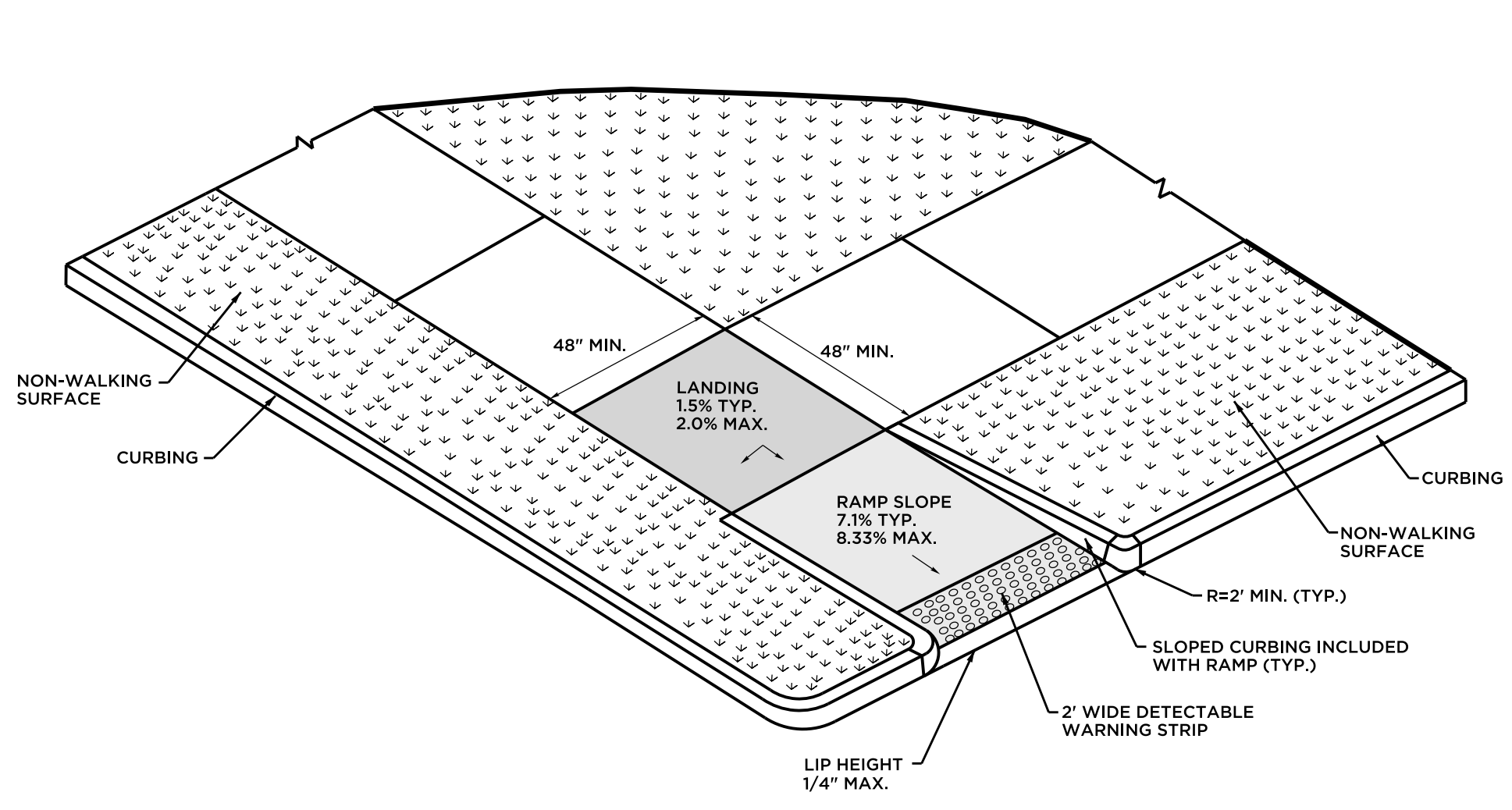
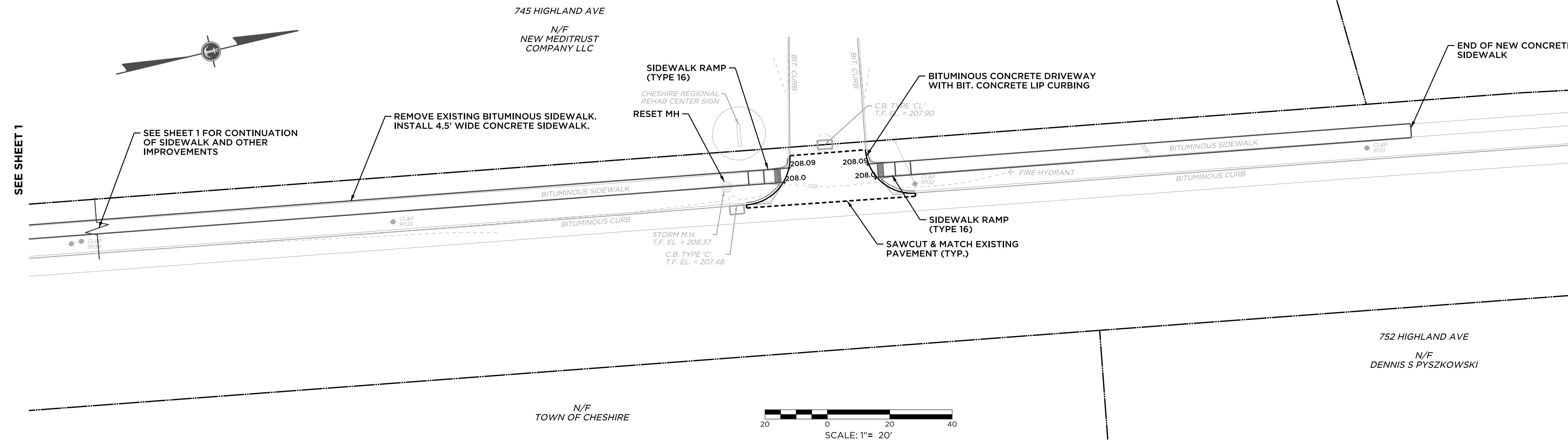


NOTES

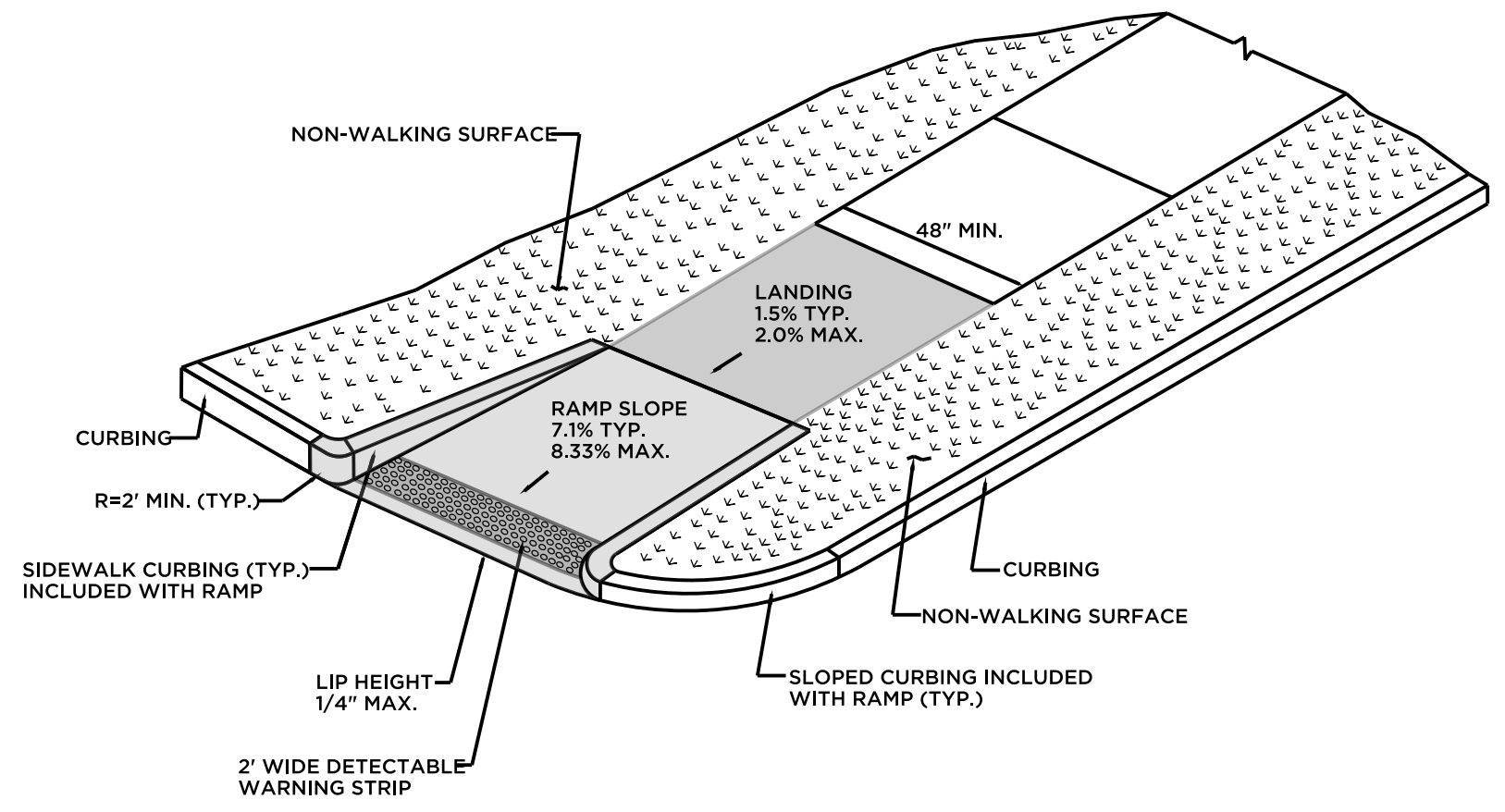
- EXISTING PEDESTRIAN SIGNALS AND ASSOCIATED CLAMPS AND HARDWARE TO BE SALVAGED. CONTRACTOR SHALL REMOVE THE SIGNALS AND COORDINATE WITH CT DOT FOR PICKUP OF THE SIGNALS.
- ALL UNPAVED DISTURBED AREAS TO BE RESTORED WITH 4" MINIMUM TOPSOIL & SEED.



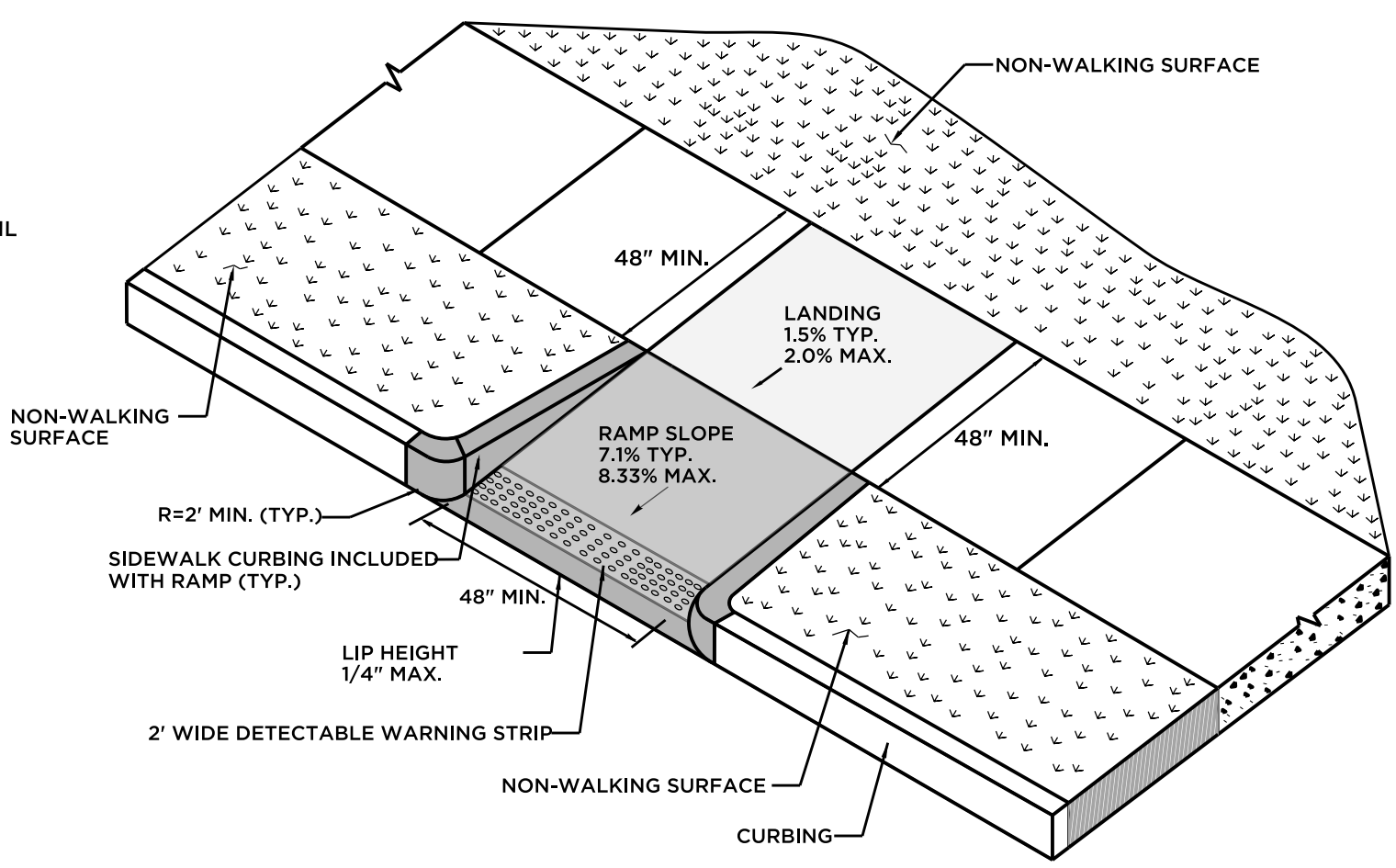
<p>Barton & Loguidice</p> <p>Civil Engineering • Environmental Consulting • Land Surveying • Construction Management</p> <p>PROJ. ENGINEER DPL PROJ. MANAGER KRG OFFICE REVIEW KRG</p>		<p>41 Sequin Drive Glastonbury, CT 06033 Phone: (860) 633-9370 Fax: (860) 633-5971 www.bandct.com</p>					
		<p>LAYOUT & GRADING PLAN</p> <p>PREPARED FOR TOWN OF CHESHIRE</p> <p>SIDEWALK RAMP IMPROVEMENTS</p> <p>HIGHLAND AVENUE CHESHIRE, CT</p>					
<p>REVISIONS</p> <table border="1"> <tr> <td> </td> <td> </td> </tr> <tr> <td> </td> <td> </td> </tr> </table>						<p>PROJECT 3981-08</p>	<p>DATE 07/27/22</p>
<p>SCALE: 1" = 10'</p>		<p>SHEET NO. 1 OF 5</p>	<p> </p>				



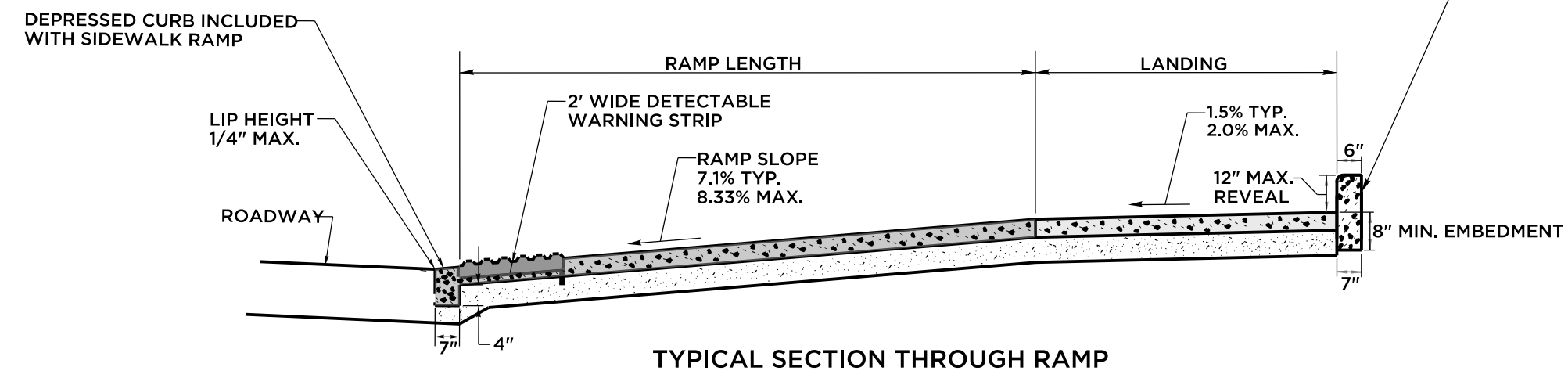
RESTRICTED PEDESTRIAN CROSSING SIDEWALK RAMP WITH NON-WALKING SURFACE (TYPE 20)



SINGLE DIRECTION - RETURN CURB WITH NON-WALKING SURFACE (TYPE 16)



PERPENDICULAR RAMP WITH NON-WALKING SURFACE (TYPE 13)

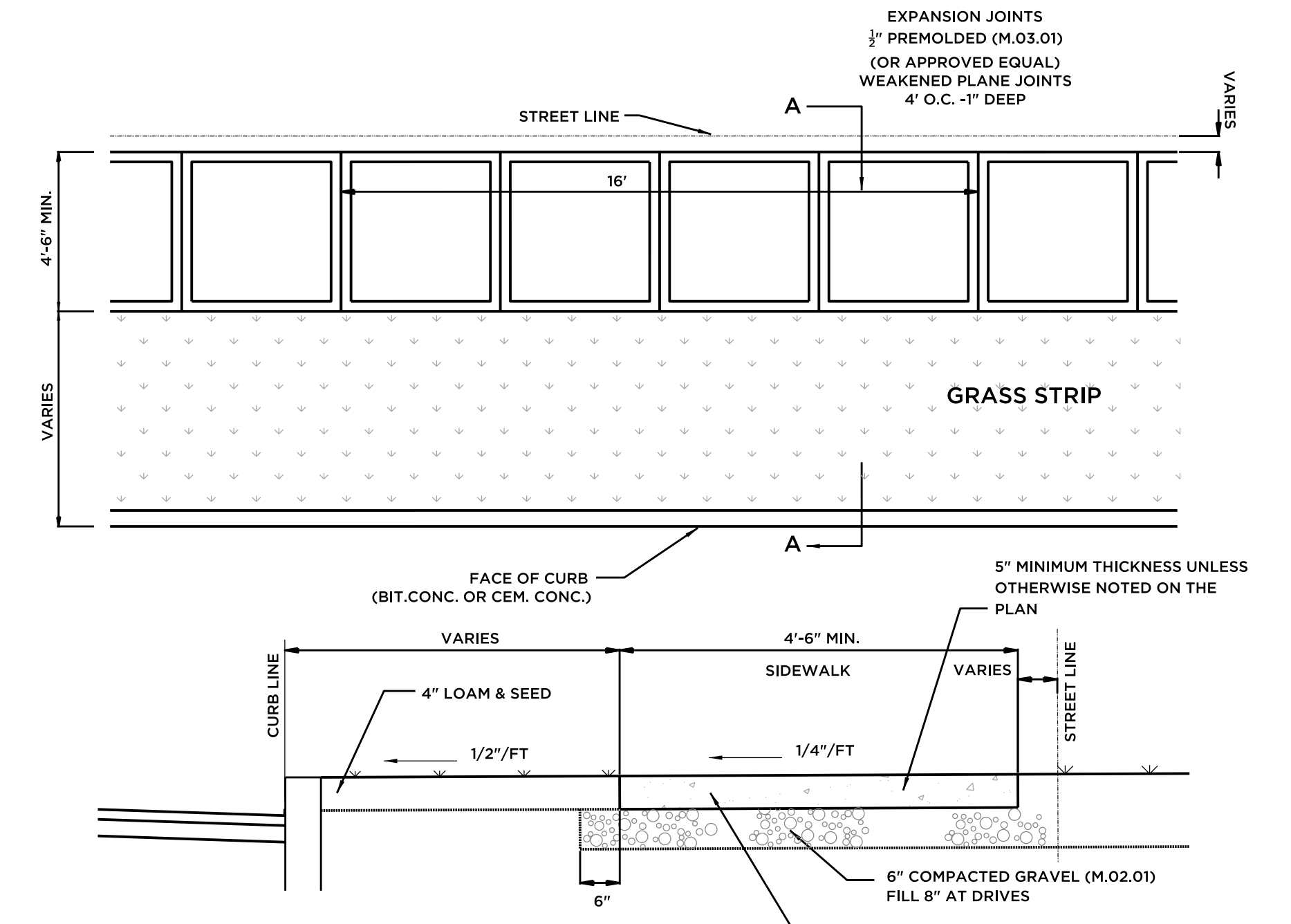


TYPICAL SECTION THROUGH RAMP

SIDEWALK AND RAMP GENERAL NOTES:

1. SIDEWALK RAMPS SHALL HAVE A COARSE BROOM FINISH TRAVERSE TO THE SLOPE OF THE RAMP.
2. VERTICAL SURFACE DISCONTINUITIES AT JOINTS SHALL NOT EXCEED 1/8 INCH.
3. REMOVAL OF EXISTING SIDEWALK FOR NEW RAMP INSTALLATIONS SHALL BE TO THE NEAREST EXPANSION OR CONTRACTION JOINT.
4. THE RUNNING SLOPE OF THE CURB RAMP SHALL BE 8.3 PERCENT MAXIMUM BUT SHALL NOT REQUIRE THE RAMP LENGTH TO EXCEED 15 FEET.

SIDEWALK RAMPS
NOT TO SCALE



- NOTES:
1. WHERE WALKS CROSS DRIVEWAYS AND FOR SIDEWALK RAMPS, THEY SHALL BE 7" THICK AND HAVE 6" X 6" W/W REINFORCING WIRE MESH 2" UP ABOVE BASE.
 2. ANTI-SPLALLING COMPOUND SHALL BE SPRAY APPLIED AT A RATE OF ONE GALLON PER 100 SQUARE FEET.
 3. EACH 4' PANEL TO BE "PICTURE FRAMED" BY THE USE OF 3" EDGING TOOL TO REDUCE LIKELIHOOD OF CHIPPING.
 4. ALL WORK AND MATERIALS SHALL CONFORM TO TOWN OF CHESHIRE GUIDELINES AND SPECIFICATIONS FOR PUBLIC IMPROVEMENTS ARTICLE IV SECTION 31 AS AMENDED.

EXPANSION JOINT (TYP.)

CEMENT CONCRETE SIDEWALK
NOT TO SCALE



Barton & Loguidice
41 Sequin Drive, Glastonbury, CT 06033
Phone: (860) 633-9370, Fax: (860) 633-5971, www.bandcl.com

Civil Engineering • Environmental Consulting • Land Surveying • Construction Management

PROJ. ENGINEER: DPL
PROJ. MANAGER: KRG
OFFICE REVIEW: KRG

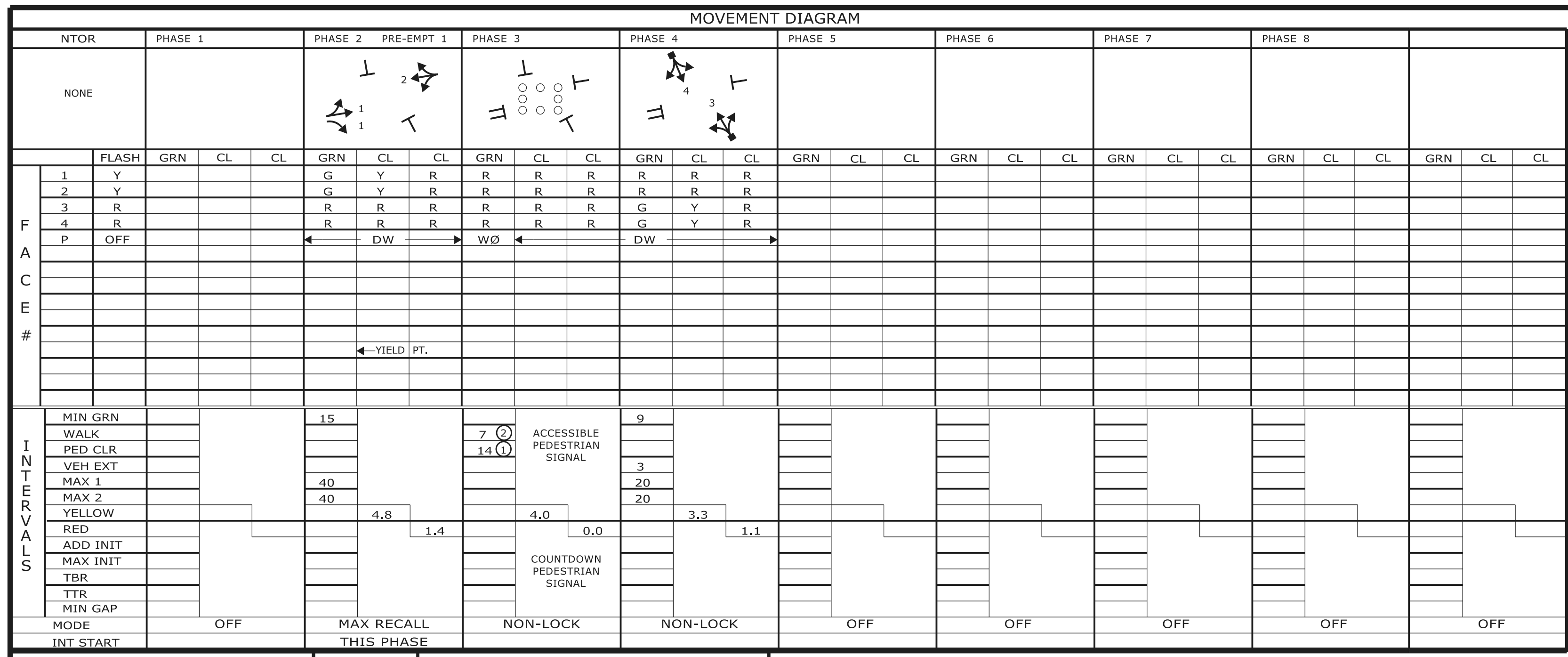
LAYOUT & DETAILS PLAN
PREPARED FOR TOWN OF CHESHIRE
SIDEWALK RAMP IMPROVEMENTS
HIGHLAND AVENUE, CHESHIRE, CT

REVISIONS:

PROJECT	DATE
3981-08	07/27/22

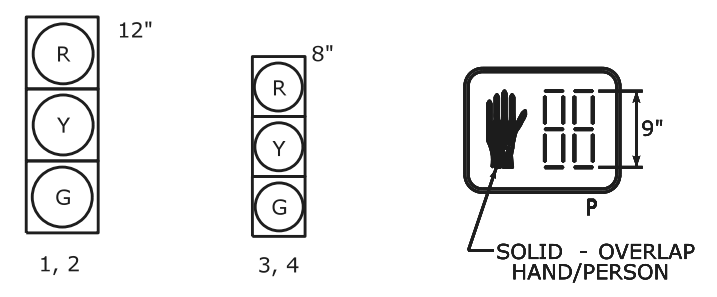
SCALE: AS NOTED

SHEET NO. **2** OF **5**



TECHNICAL NOTES		OFFICE RECORD	
STANDARD OVERLAP SKIP FEATURES APPLY		TIR # N/A	SM # 101166
TIMINGS SHOWN REFLECT FREE OPERATION		REV # 9	SIGNAL REVISED: 10-19-2017
ACTUAL COORDINATION INFORMATION TO BE DETERMINED BY THE CLOSED LOOP LOCAL COORDINATION UNIT.		TIR # N/A	SM # N/A
PRE-EMPTION TO BE INOPERATIVE DURING FLASHING OPERATION.		REV # 10	SIGNAL REVISED: 11/05/2020
① COUNTDOWN ONLY DURING FLASHING PEDESTRIAN CHANGE INTERVAL.		TIR # N/A	SM # N/A
② PERCUSSIVE TONE ONLY DURING PEDESTRIAN WALK INTERVAL.		REV # 11	SIGNAL REVISED: 02/21/2022
		TRAFFIC & ELEC. DES: TRAFFIC SIGNALS UNIT.	REV. PEDESTRIAN SIGNAL INDICATIONS UNDER PROJ. 0171-0449
		REV #	TIR # N/A
		SM # N/A	SIGNAL REVISED:
		NEW PEDESTRIAN SIGNALS AND PUSHBUTTONS INSTALLED UNDER PERMIT.	

SIGNAL FACES



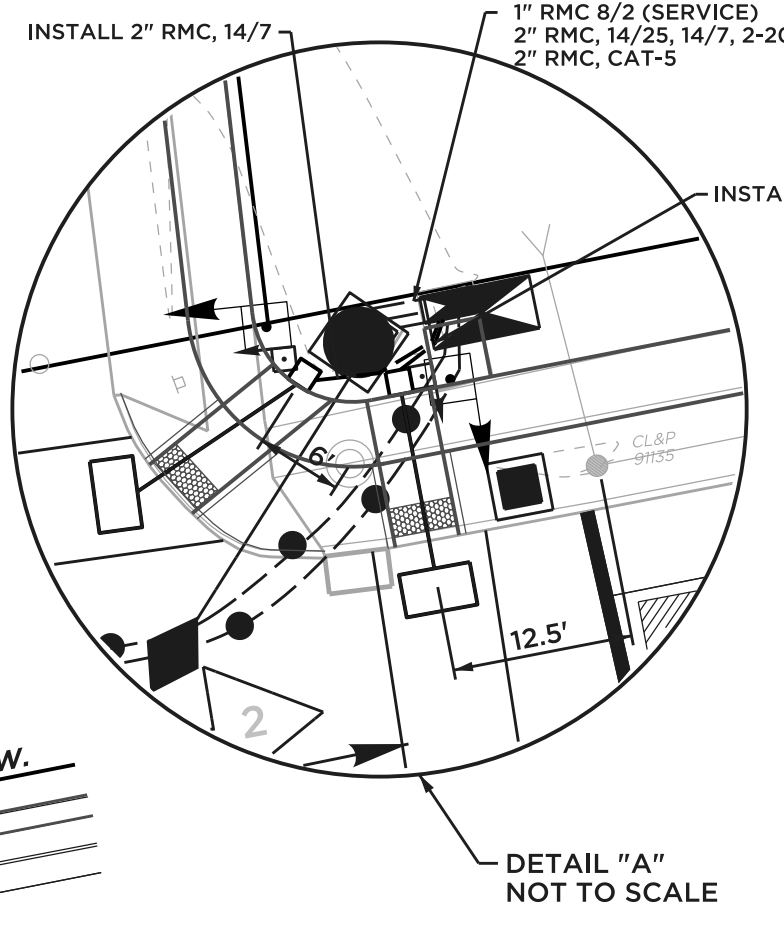
ALL INDICATIONS HAVE LED LAMPS.

PRE-EMPTION SETTINGS

	PRE-EMPT 1
PRIORITY	NO
DET. LOCK	YES
DELAY	0
ALT. MIN. GRN	5
ALT. YELLOW	PARENT
ALT. RED	PARENT
ALT. PED. CLR.	14
HOLD GREEN	15
HOLD YELLOW	4.8
HOLD RED	1.4
HOLD PHASE	2
EXIT PHASE	4
EXIT CALL	NONE

CONSTRUCTION NOTES

- ALL MATERIAL AND CONSTRUCTION METHODS SHALL CONFORM TO THE FOLLOWING CURRENT D.O.T. DOCUMENTS WHICH CAN BE ACCESSED ON THE D.O.T. WEBSITE: STANDARD SPECIFICATIONS FOR ROADS, BRIDGES AND INCIDENTAL CONSTRUCTION; SUPPLEMENTAL SPECIFICATION TO THE STANDARD SPECIFICATION; SPECIAL PROVISIONS TO THE STANDARD SPECIFICATIONS; STANDARD INSTALLATION AND GUIDE DETAIL SHEETS.
- ALL TRAFFIC SIGNAL EQUIPMENT IS EXISTING, EXCEPT AS NOTED.
- STAKE ALL R.O.W. PRIOR TO EXCAVATION.
- THE LOCATION OF TRAFFIC SIGNAL FOUNDATIONS WHEN IN OR ADJACENT TO SIDEWALKS SHALL BE VERIFIED PRIOR TO INSTALLATION TO PROVIDE A FREE PATH OF NOT LESS THAN 4 FEET. IF A MINIMUM 4 FOOT FREE PATH IS UNAVAILABLE, NOTIFY THE ENGINEER AND CONTACT THE DIVISION OF TRAFFIC ENGINEERING.
- INSTALL PEDESTAL FOUNDATIONS ADJACENT TO LANDING AREAS.
- THE TOP OF PEDESTAL FOUNDATIONS WITHIN SIDEWALK AREAS ARE TO BE LEVEL WITH SIDEWALK. IN EARTH AREAS, FOUNDATIONS TO HAVE 3" REVEALS.
- ANY PROPOSED REVISIONS TO THE LOCATION OF THE APPURTENANCES SHOWN ON THE PLAN MUST BE SUBMITTED FOR REVIEW AND APPROVAL BY THE DIVISION OF TRAFFIC ENGINEERING PRIOR TO INSTALLATION.
- THE CONTRACTOR SHALL OBTAIN ALL NECESSARY STATE AND TOWN PERMITS, INCLUDING BUT NOT LIMITED TO: SIDEWALK, CURB AND ROADWAY OPENING.
- REMOVE ALL ABANDONED TRAFFIC SIGNAL EQUIPMENT PER SPECIAL PROVISION.
- INSTALL A TOGGLE BOLT AND WASHER TO EFFECTIVELY SEAL EACH HOLE LEFT IN THE SPAN POLES WHERE ANY TRAFFIC SIGNAL EQUIPMENT HAS BEEN REMOVED.
- THE CONTRACTOR SHALL TELEPHONE "CALL BEFORE YOU DIG" 48 HOURS PRIOR TO ANY EXCAVATION.
- THE CONTRACTOR SHALL COORDINATE WITH UTILITY COMPANY REPRESENTATIVES AND TOWN AGENCIES TWO WEEKS PRIOR TO EXCAVATION.
- SEE ROADWAY PLAN FOR SIDEWALK AND SIDEWALK RAMPS.
- INSTALL TWO-WAY PEDESTRIAN SIGNAL AND APS PEDESTRIAN PUSH BUTTONS ON EXISTING SPAN POLE.
- INSTALL ONE-WAY PEDESTRIAN SIGNAL AND APS PEDESTRIAN PUSH BUTTONS ON EXISTING PEDESTAL.
- INSTALL TWO-WAY PEDESTRIAN SIGNAL AND APS PEDESTRIAN PUSH BUTTONS ON NEW 8' PEDESTAL AND FOUNDATION.
- INSTALL ONE-WAY PEDESTRIAN SIGNAL AND APS PEDESTRIAN PUSH BUTTONS ON NEW 8' PEDESTAL AND FOUNDATION.
- LOCATE EXISTING RIGID METAL CONDUIT. EXTEND INTO NEW PEDESTAL FOUNDATION.
- CONTRACTOR TO COMPLETE ANY VEGETATION TRIMMING REQUIRED FOR INSTALLATION OF OR VISIBILITY TO PROPOSED SIGNAL EQUIPMENT.
- TRAFFIC CONTROL FOUNDATIONS SHALL BE LOCATED A MINIMUM OF 5' FROM UNDERGROUND UTILITIES. WRITTEN CONCURRENCE FROM THE UTILITY COMPANY REQUIRED TO REDUCE THIS SEPARATION.
- CONTRACTOR TO VERIFY LOCATION OF EXISTING CONDUITS IN THE LOCATIONS OF PROPOSED NEW EQUIPMENT PRIOR TO INSTALLATION.
- MODIFY CONTROLLER FOUNDATION TO ACCEPT NEW CONDUIT.
- MODIFY EXISTING CONTROLLER TO ACCOMMODATE CHANGES. SUPPLY 5 COPIES OF REVISED CABINET WIRING DIAGRAMS AND A DIGITAL PDF COPY TO DOT.TRAFFICELECTRICAL@CT.GOV.
- COORDINATE THIS REVISION WITH CONNECTICUT D.O.T. SIGNAL LAB. CONTACT MR. MARK ZAMPINI (860) 258-0349 AT LEAST 14 DAYS PRIOR TO REVISION.
- COORDINATE WITH UTILITY COMPANY REPRESENTATIVES LISTED IN THE SPECIAL PROVISION, 1.07 - LEGAL RELATIONS AND RESPONSIBILITIES.

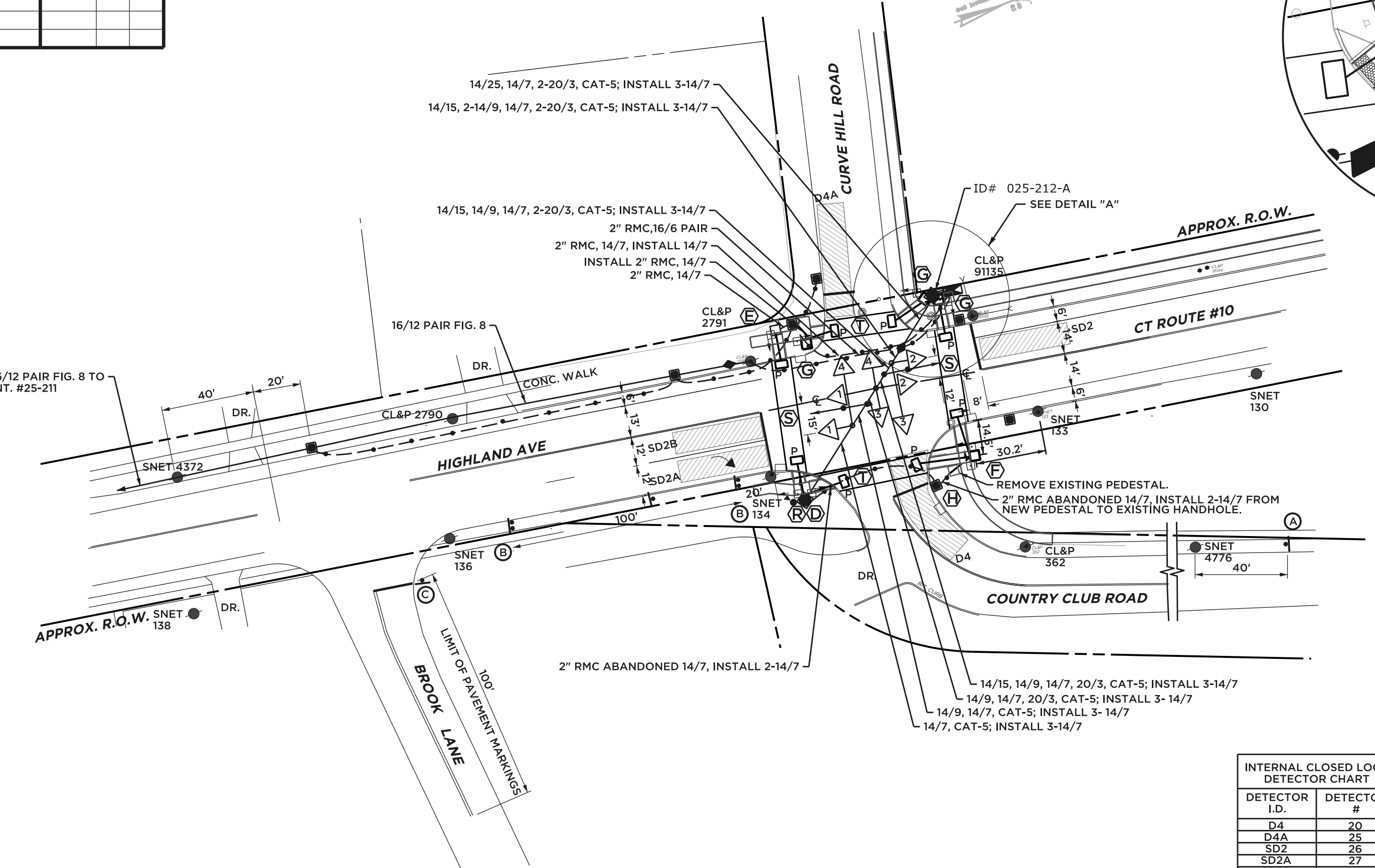


SIGN LEGEND

- (A) EXIST. 41-0353 (SIGNAL AHEAD)
- (B) EXIST. 31-0350
- (C) EXIST. 31-0002

NOTES

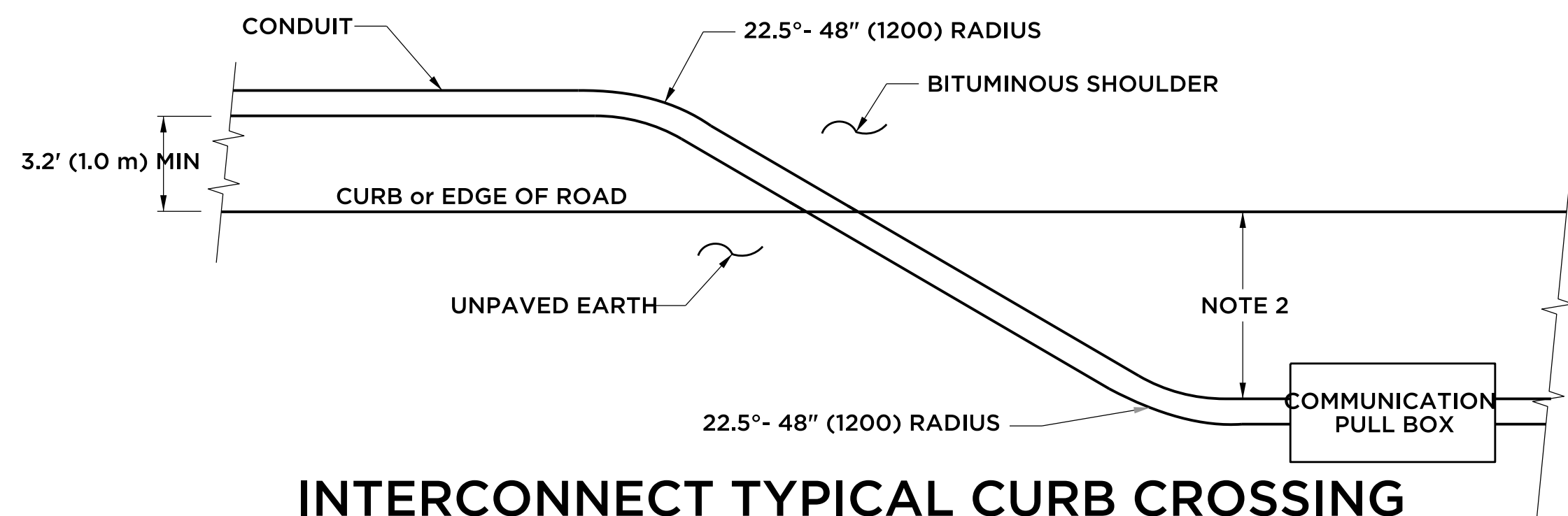
- ALL EXISTING PAVEMENT MARKINGS TO REMAIN AS SHOWN EXCEPT CROSSWALKS.
- EXISTING CROSSWALKS TO BE REMOVED. NEW BAR TYPE CROSSWALKS TO BE INSTALLED AS SHOWN (24" - 16" X 8").
- PRE-EMPTION EQUIPMENT TO BE MAINTAINED BY THE TOWN OF CHESHIRE.
- (S) STATE MAINTAINED CROSSWALK
- (T) TOWN TO MAINTAIN CROSSWALKS ON CURVE HILL ROAD AND COUNTRY CLUB ROAD
- (R) VIDEO DETECTION BY USE OF 360 DEGREE CAMERA.



DETECTOR I.D.	DETECTOR #
D4	20
SDA	25
SD2	26
SD2A	27
SD2B	28

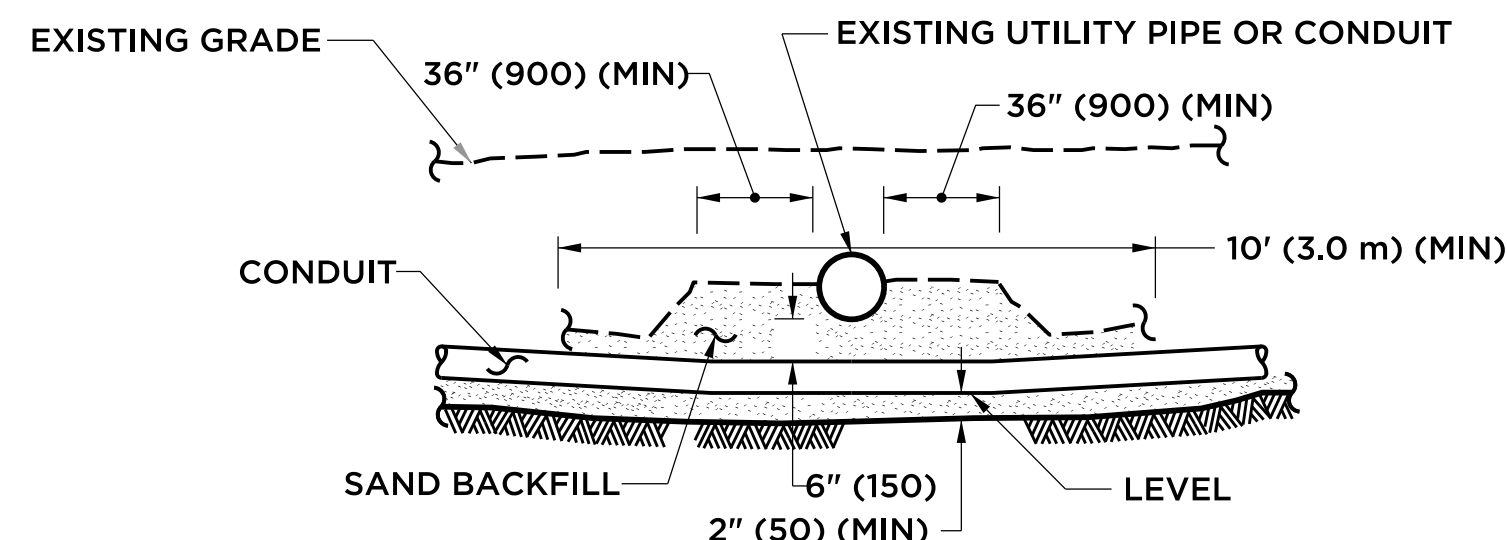
SPAN POLE INFORMATION				
ID #	POLE LENGTH	BOLT CIRCLE	LOAD AT YIELD	YEAR INSTALLED
ID# 025-212-A	28'	20"	6100 lbs.	1995
ID# 025-212-B	28'	20"	6100 lbs.	1995

			STATE OF CONNECTICUT DEPARTMENT OF TRANSPORTATION	CHESHIRE TRAFFIC CONTROL SIGNAL PLAN
ENGINEER: [] DRAWN BY: [] CHECKED BY: [] SUBMITTED BY: [] APPROVED BY: [] APPROVED DATE: []	TRAFFIC: [] DATE: [] ELECTRICAL: [] DATE: []	REV # 3981.008 INTERSECTION # 025-212 ENERGY BY - TOWN MAINT LEVEL 5 ADDRESS # SERVICE POLE - CL&P 2791 UNMETERED SERVICE	TOWN: CHESHIRE PROJECT NO. 3981.008 DRAWING NO. [] SHEET NO. 3	ROUTE 10 (HIGHLAND AVE) AT COUNTRY CLUB RD & CURVE HILL RD SCALE 1" = 40'



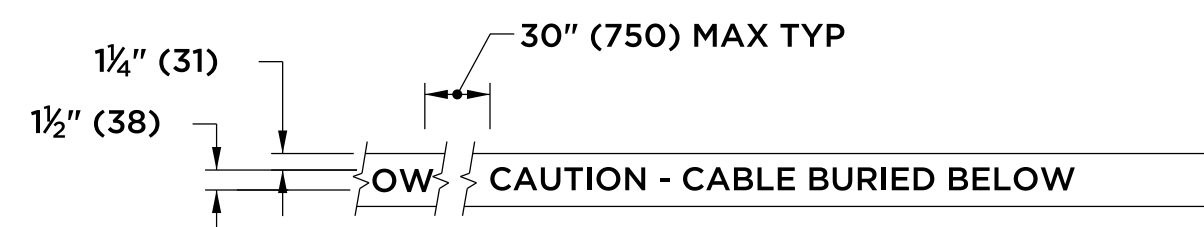
INTERCONNECT TYPICAL CURB CROSSING

- NOTES:
- RESTORE AREAS DISTURBED BY TRENCH TO ORIGINAL CONDITION.
 - INSTALL PULL BOX A MINIMUM OF 10' (3.0 m) FROM CURB UNLESS OTHERWISE SHOWN ON PLANS OR DIRECTED BY ENGINEER.



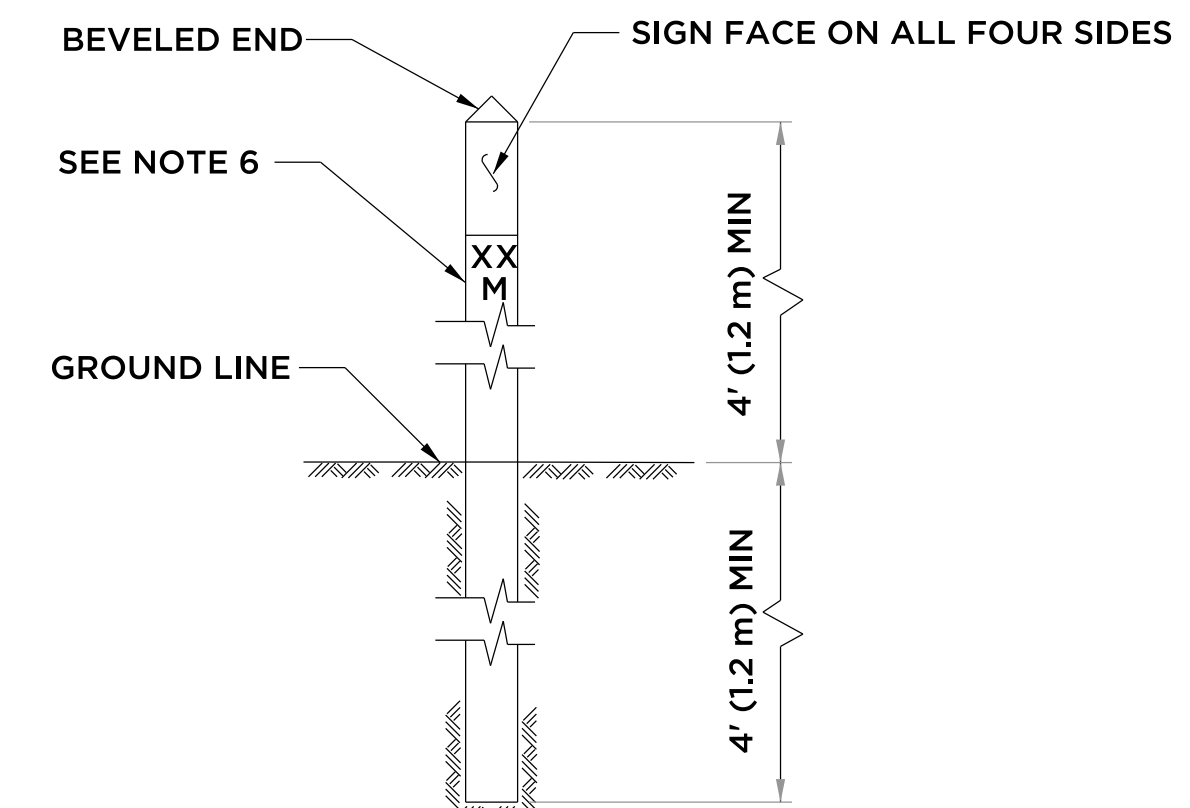
CROSSING UNDER EXISTING UTILITY

- NOTES:
- WHEN ENCOUNTERED AT APPROXIMATELY THE SAME DEPTH, CROSS BENEATH.
 - PROTECT & SUPPORT EXPOSED EXISTING UTILITY.



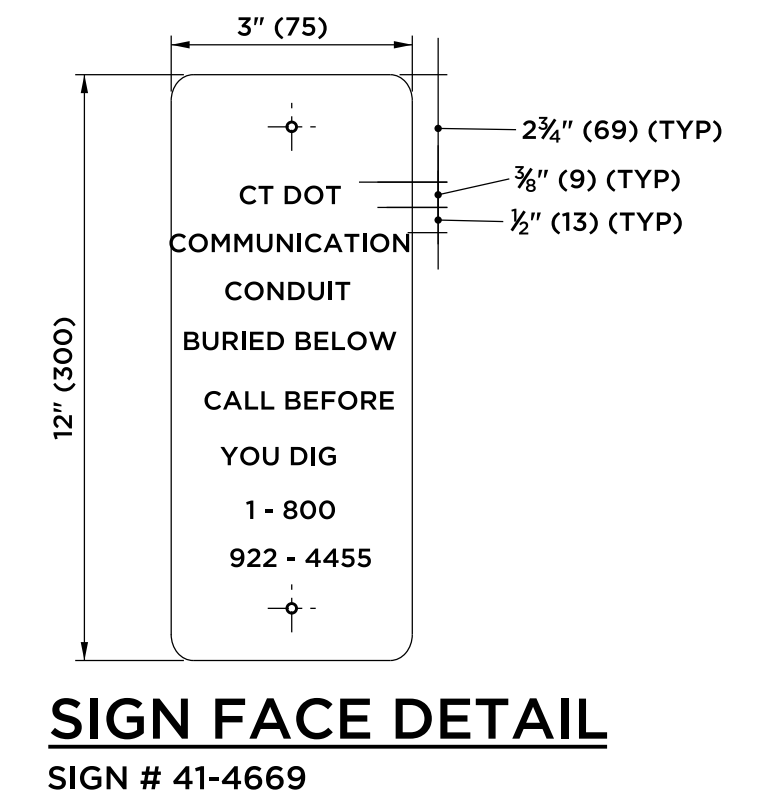
DETECTABLE WARNING TAPE

- NOTE:
STANDARD SPECIFICATIONS, ARTICLE: 1.05.15
- TAPE COLORS:
COMMUNICATION - ORANGE BACKGROUND / BLACK LEGEND
POWER - RED BACKGROUND / BLACK LEGEND



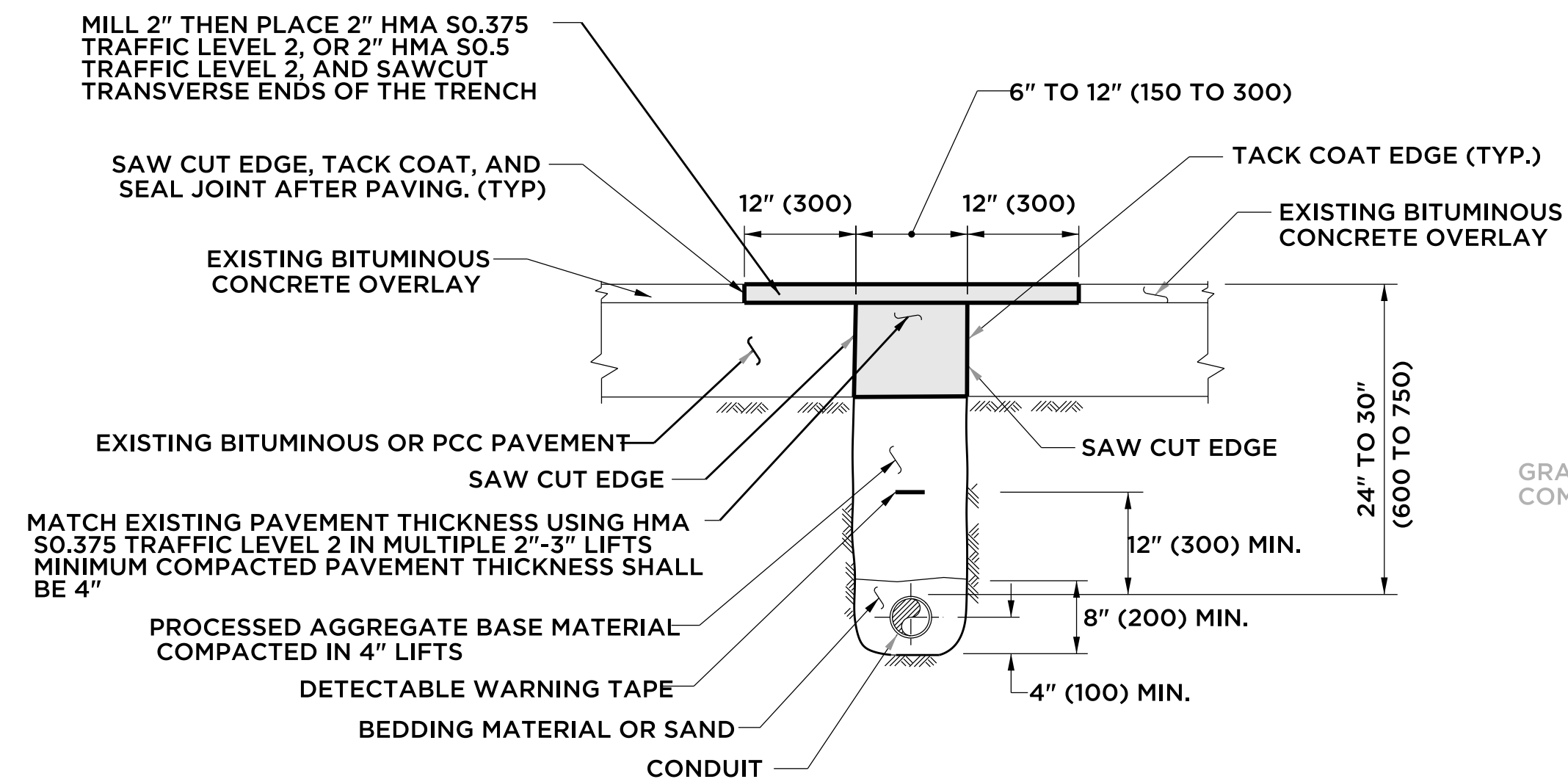
INTERCONNECT CONDUIT IDENTIFICATION POST

- NOTES:
- 4" x 4" (100 x 100) NOMINAL, PRESSURE TREATED WOOD POST.
 - ATTACH SIGN TO POST WITH 1/4" x 1 1/4" (6 x 31) STAINLESS STEEL LAG SCREW WITH NYLON WASHER ON FACE OF SIGN.
 - SIGN COLORS: BACKGROUND - ORANGE (RETROREFLECTIVE) LEGEND - BLACK (OPAQUE).
 - INSTALL POST APPROX 24" (600) FROM RMC IN VICINITY OF EACH PULL BOX.
 - INSTALL POSTS BETWEEN PULL BOXES, APPROX 10' (3.0 m) OFF CURB. SPACE POSTS 1500' (460 m) APART.
 - PERMANENTLY ATTACH STAINLESS STEEL NUMBERS INDICATING DISTANCE TO TRENCH IN FEET (METERS) CONTAINING COMMUNICATION CABLE. ATTACH NUMBERS TO SIDE OF POST FACING CONDUIT. INCLUDE "M" SUFFIX IF METERS.



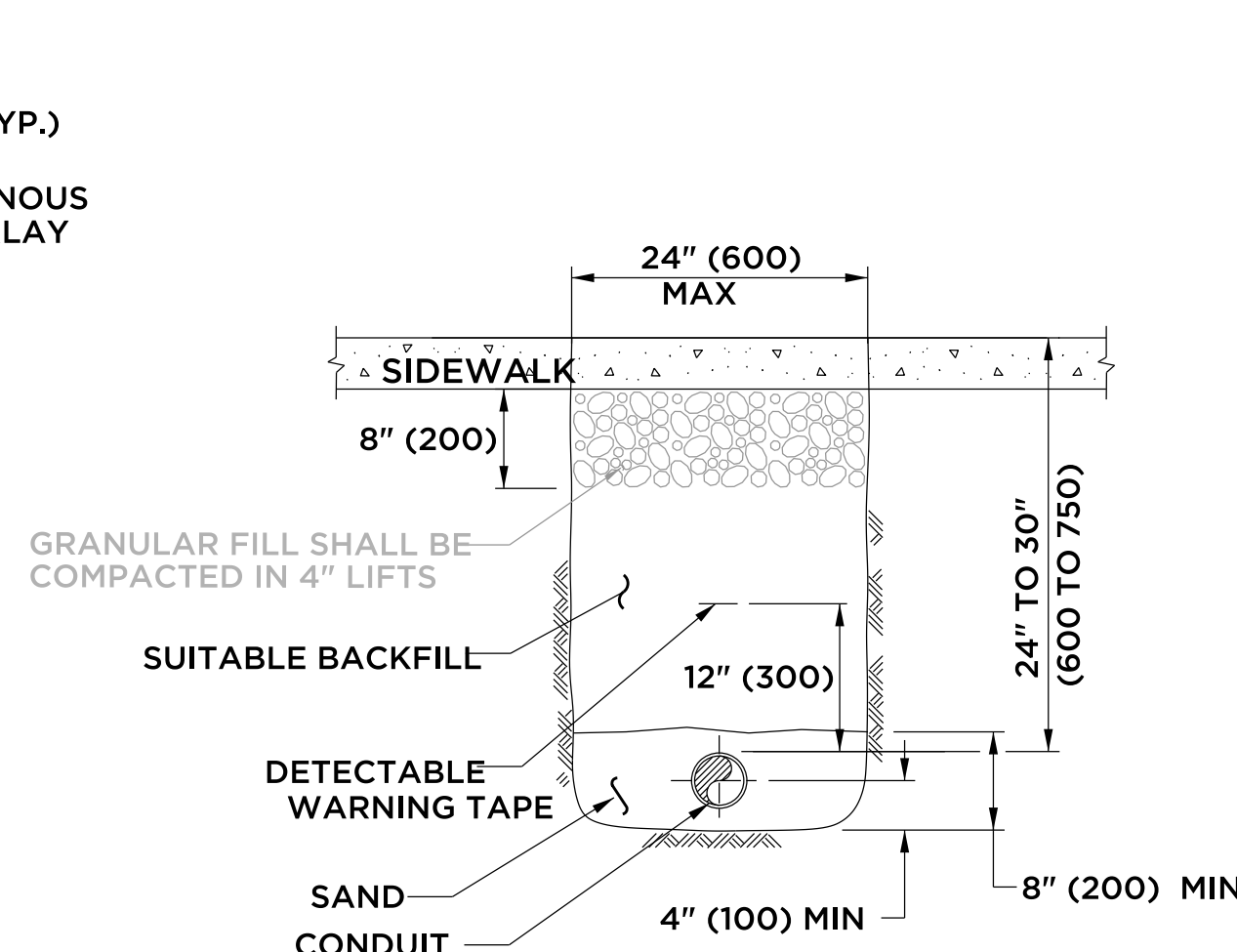
SIGN FACE DETAIL

SIGN # 41-4669



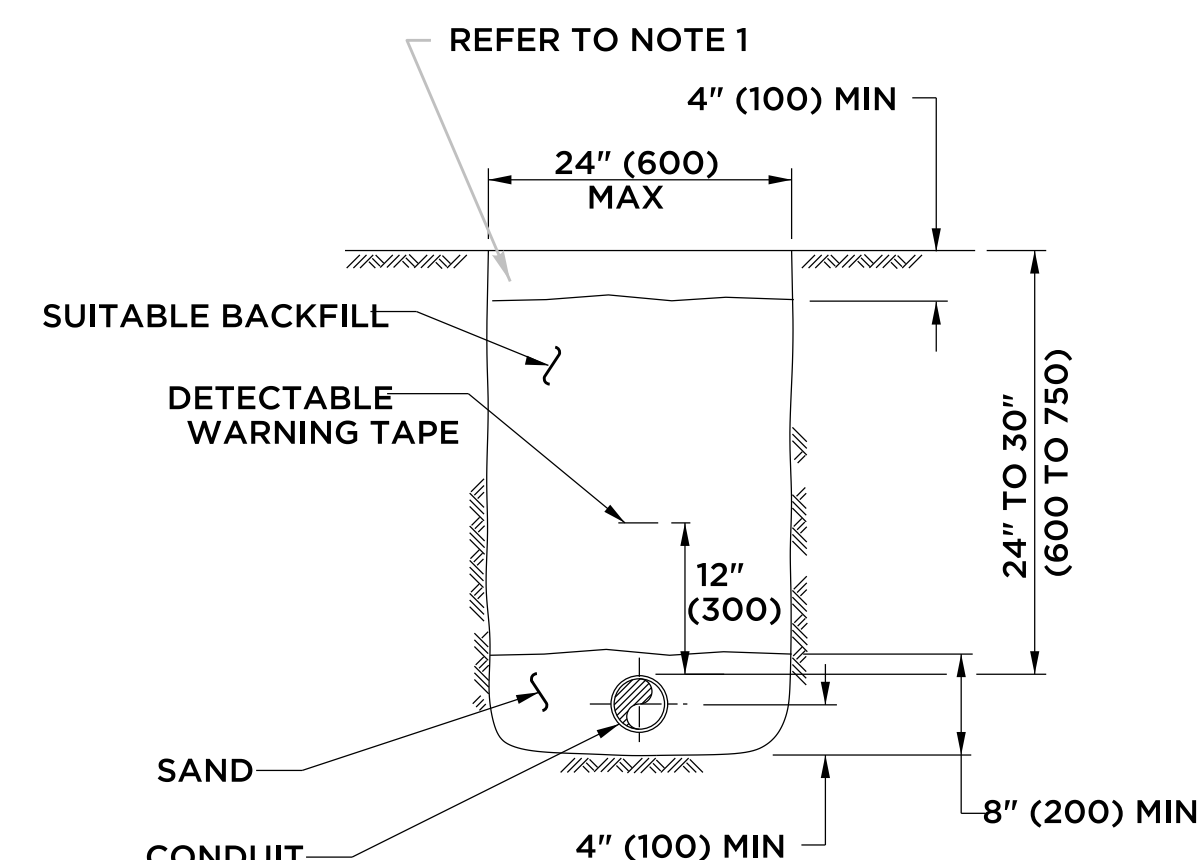
PAVEMENT - BITUMINOUS CONCRETE OR OVERLAYED PORTLAND CEMENT CONCRETE

- NOTES:
- STANDARD SPECIFICATION, ARTICLE 3.04 AND SPECIAL PROVISION, SECTION 4.06.03
- TOTAL HOT MIX ASPHALT (HMA) THICKNESS TO MATCH EXISTING BITUMINOUS CONCRETE AND PORTLAND CEMENT CONCRETE (PCC) THICKNESS.
 - WHEN ALLOWED BY ENGINEER, USE CONTROLLED LOW STRENGTH MATERIAL (CLSM) AS BEDDING MATERIAL. TOP OF CLSM AT LEAST 20" (500) BELOW SURFACE.



SIDEWALK

- NOTES:
- STANDARD SPECIFICATIONS, ARTICLE: 9.21 & 9.22
- WHERE CONCRETE SIDEWALK DAMAGED OR CUT, REPLACE THE ENTIRE SECTION BETWEEN JOINTS. REPLACEMENT SIDEWALK IS PAID FOR AT THE CONTRACT UNIT PRICE FOR "CONCRETE SIDEWALK".



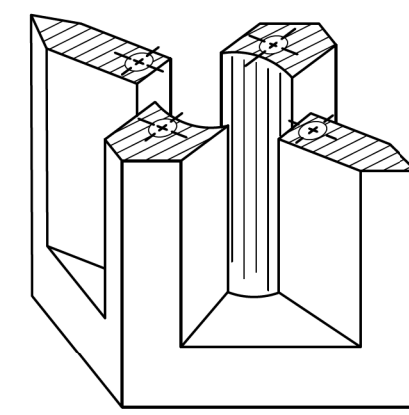
EARTH

- NOTES:
- STANDARD SPECIFICATIONS, ARTICLE: 9.50
- IN MOWED AREAS: PLACE TOPSOIL, FERTILIZER, SEED, & MULCH.

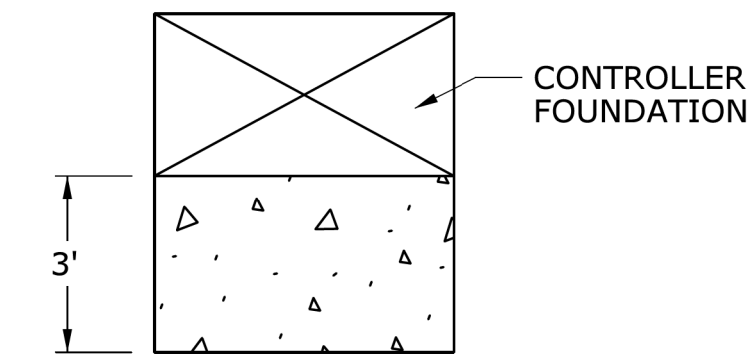
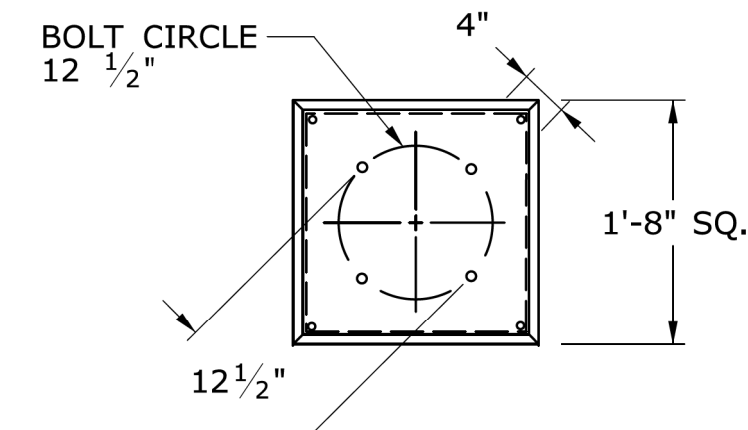
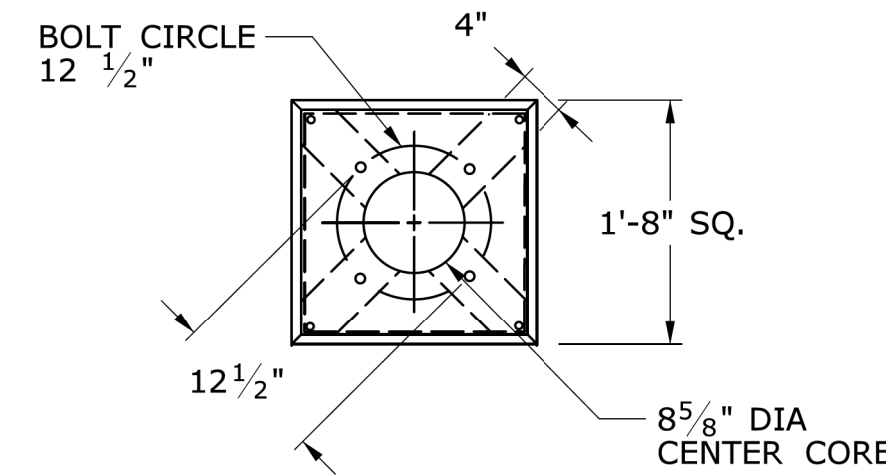


LEGEND AS SHOWN ON TRAFFIC CONTROL SIGNAL PLAN:
--- RMC (RIGID METAL CONDUIT)

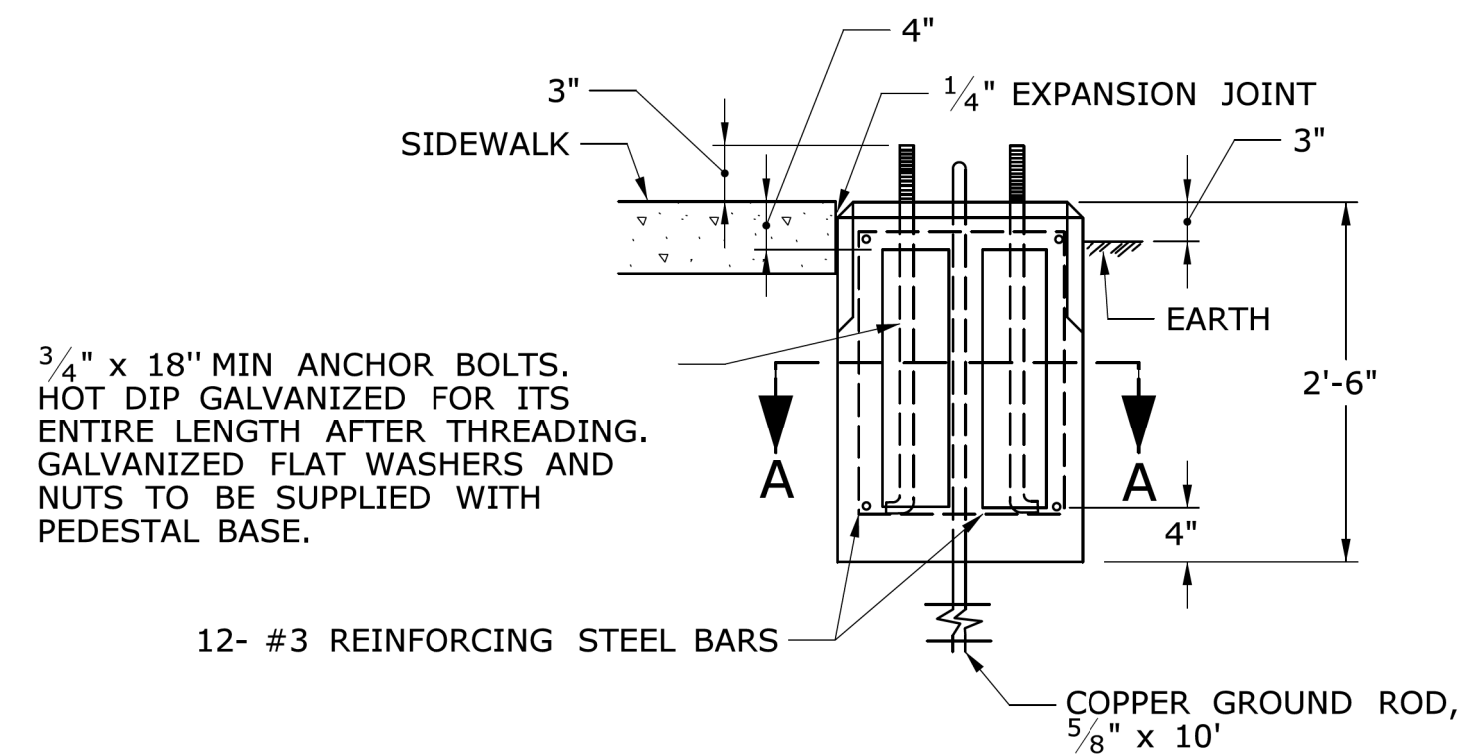
		41 Sequin Drive Glastonbury, CT 06033 Phone: (860) 633-9370 Fax: (860) 633-5971 www.bandct.com	
		Civil Engineering • Environmental Consulting • Land Surveying • Construction Management	
PROJ. ENGINEER	DPL	ELECTRICAL CONDUIT DETAILS PREPARED FOR TOWN OF CHESHIRE SIDEWALK RAMP IMPROVEMENTS	
PROJ. MANAGER	KRG		
OFFICE REVIEW	KRG	PROJECT: HIGHLAND AVENUE DATE: 07/27/22 SHEET NO. 4 OF 5	
REVISIONS		SCALE: NOT TO SCALE	



PICTORIAL SECTION A-A



INSTALL PRECAST OR CAST IN PLACE CONCRETE SIDEWALK ON CABINET DOOR SIDE OF CONTROLLER FOUNDATION.
PITCH SIDEWALK 1/4" PER FOOT AWAY FROM THE CONTROLLER FOUNDATION.
REFER TO HIGHWAY STANDARD SHEET HW-921.01 FOR SIDEWALK CONSTRUCTION.



3/4" x 18" MIN ANCHOR BOLTS. HOT DIP GALVANIZED FOR ITS ENTIRE LENGTH AFTER THREADING. GALVANIZED FLAT WASHERS AND NUTS TO BE SUPPLIED WITH PEDESTAL BASE.

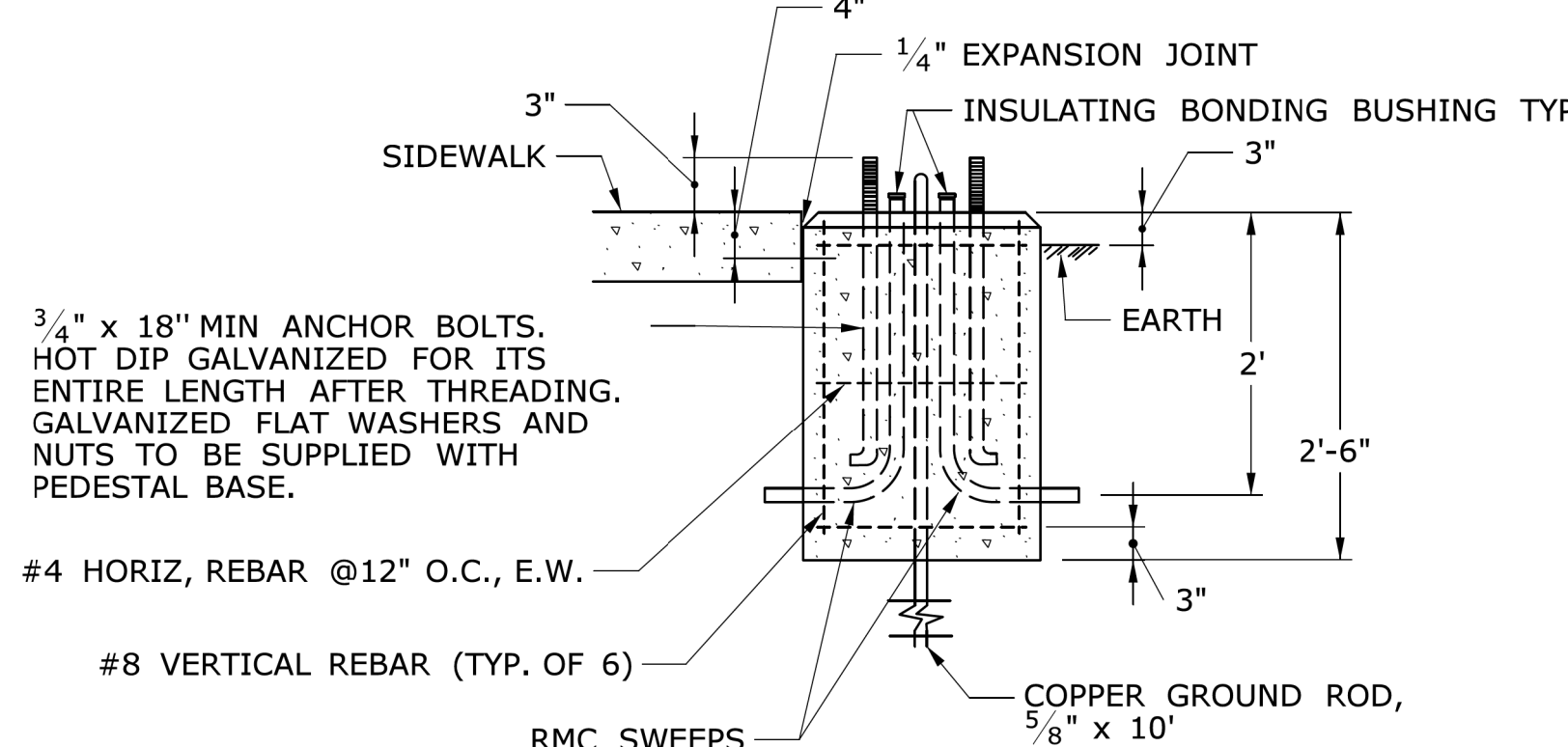
12- #3 REINFORCING STEEL BARS

COPPER GROUND ROD, 5/8" x 10'

TRAFFIC CONTROL FOUNDATION PEDESTAL - TYPE I - PRECAST

NOTES:

PLACE NO. 6 CRUSHED STONE IN CENTER OPENING AFTER CONDUITS AND GROUND ROD HAVE BEEN INSTALLED.



3/4" x 18" MIN ANCHOR BOLTS. HOT DIP GALVANIZED FOR ITS ENTIRE LENGTH AFTER THREADING. GALVANIZED FLAT WASHERS AND NUTS TO BE SUPPLIED WITH PEDESTAL BASE.

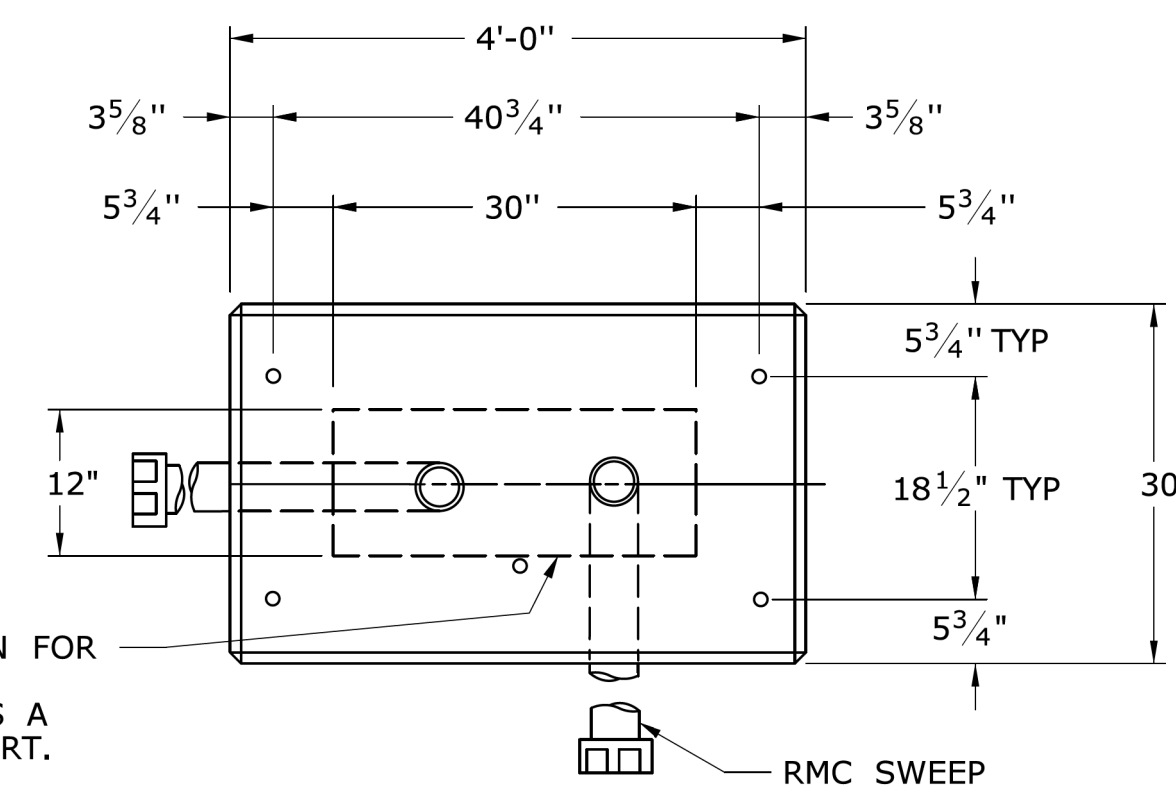
#4 HORIZ, REBAR @12" O.C., E.W.

#8 VERTICAL REBAR (TYP. OF 6)

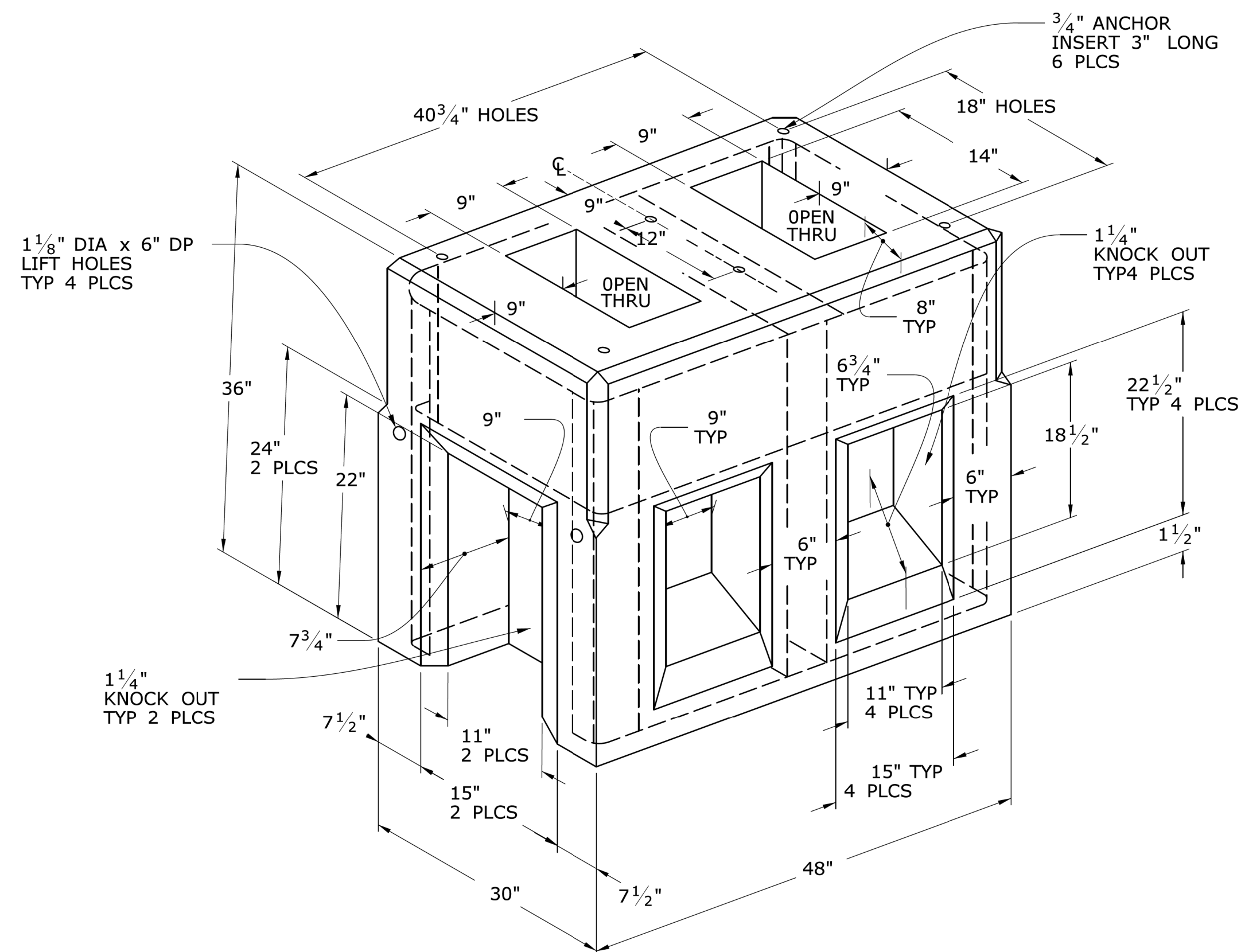
RMC SWEEPS

TRAFFIC CONTROL FOUNDATION PEDESTAL - TYPE I - CAST IN PLACE

TYPICAL CONCRETE SIDEWALK AT CONTROLLER FOUNDATION

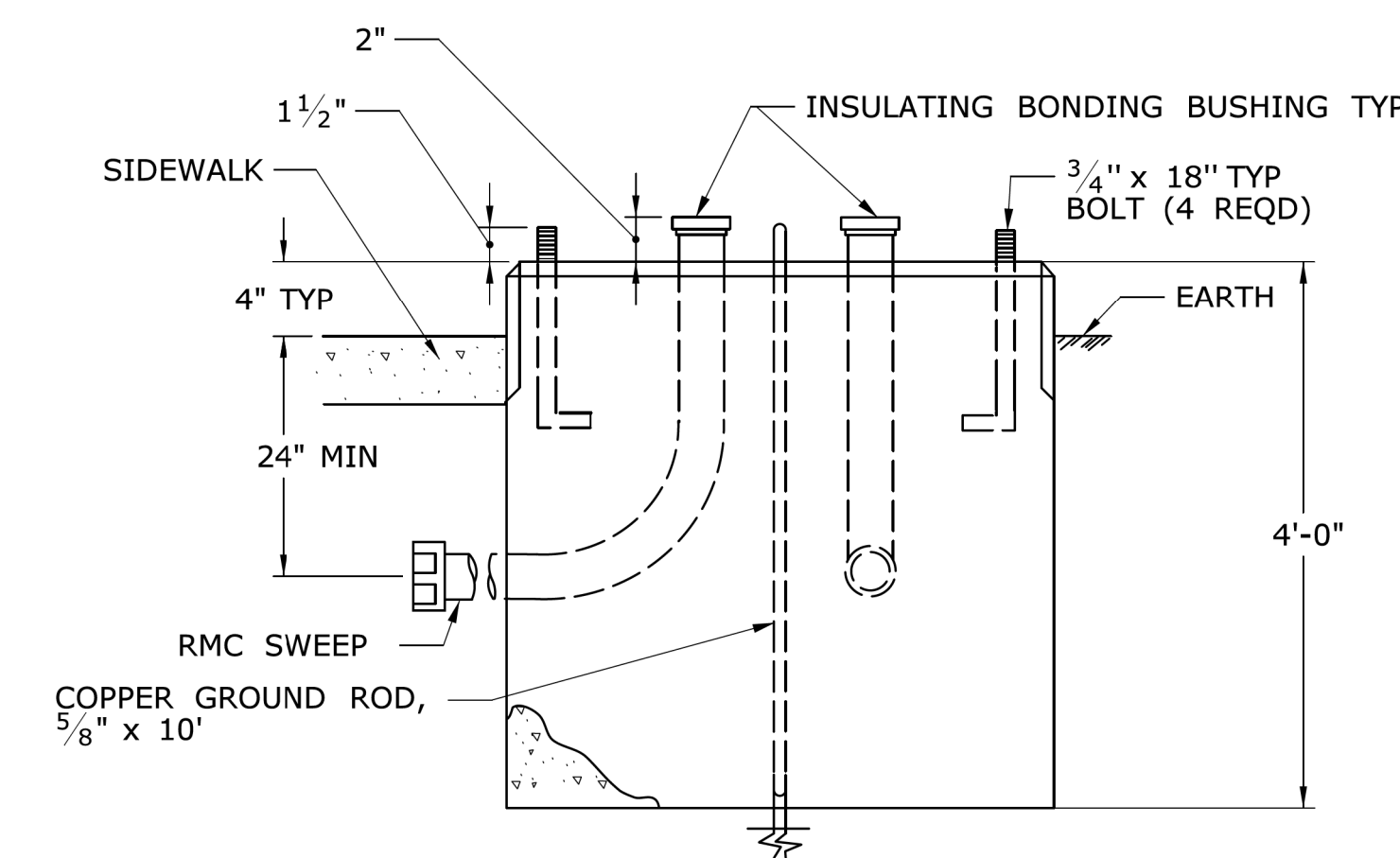


AREA OF LIMITATION FOR CONDUIT SWEEPS. SEPARATE CONDUITS A MINIMUM OF 2" APART.



TRAFFIC CONTROL FOUNDATION CONTROLLER - TYPE IV - PRECAST

LEGEND AS SHOWN ON TRAFFIC CONTROL SIGNAL PLAN:	
	PROPOSED CONTROLLER
	EXISTING CONTROLLER
	PROPOSED STEEL SPAN POLE
	EXISTING STEEL SPAN POLE



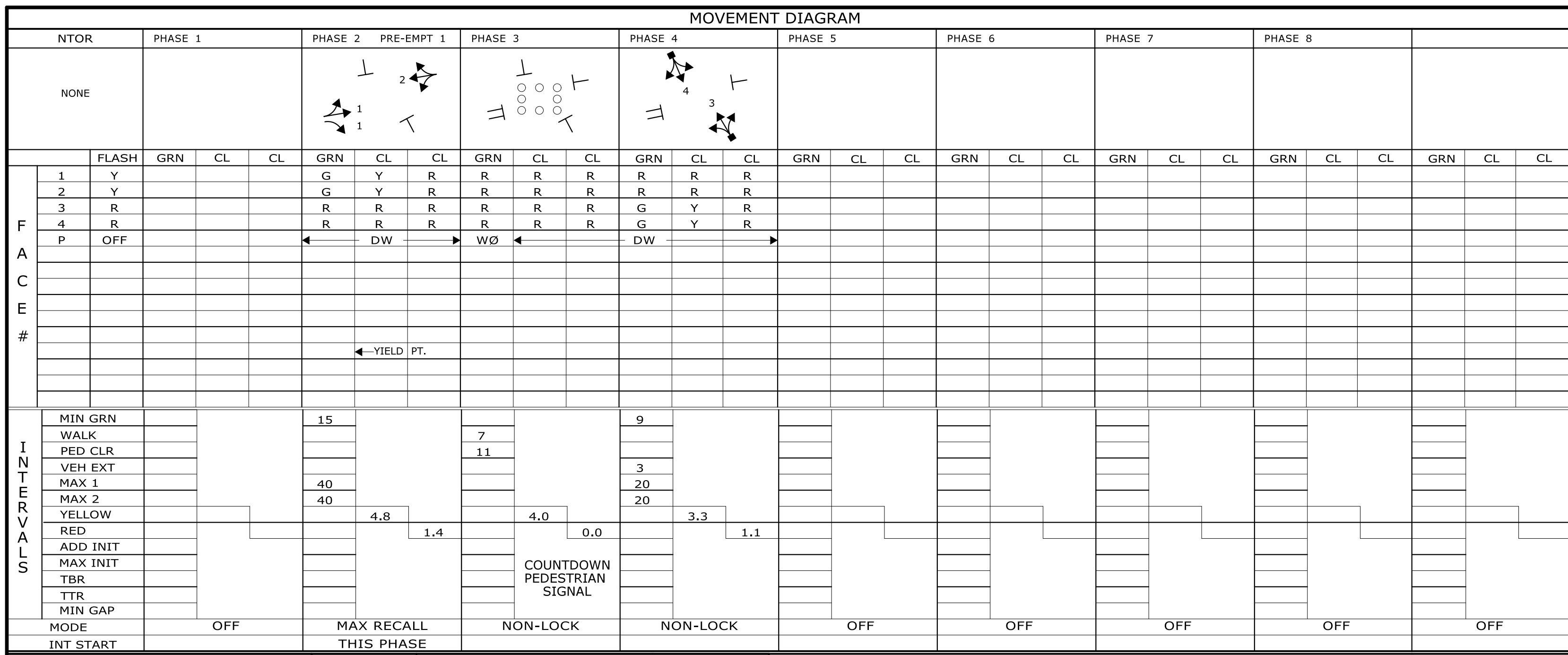
TRAFFIC CONTROL FOUNDATION CONTROLLER - TYPE IV - CAST IN PLACE

NOTES:

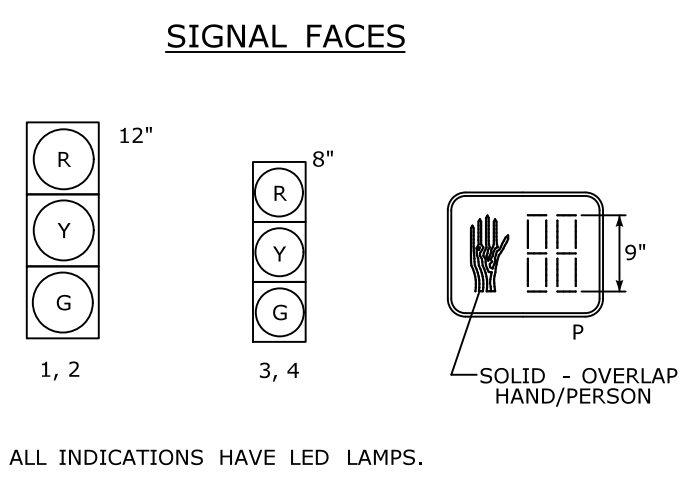
INSTALL FOUNDATION ON 6" OF COMPACTED GRAVEL IN ACCORDANCE WITH SECTION 2.14. LEVEL FOUNDATION WITH A PROJECTION OF 4" ABOVE FINISHED GRADE.
INSTALL COPPER GROUND ROD: 5/8" x 10'.
PLACE NO. 6 CRUSHED STONE IN THE CENTER OPENINGS AFTER THE CONDUITS AND GROUND ROD HAVE BEEN INSTALLED. THE OPENINGS SHALL BE CAPPED WITH A 2" GROUT LEVEL WITH THE TOP OF THE FOUNDATION AND NEATLY FINISHED. THE GROUT SHALL CONFORM WITH THE REQUIREMENTS OF ARTICLE M.3.01-12.
CONCRETE: CLASS PCC04461 CONFORMING TO ARTICLE M.03.01.
#4 REBAR 2" MIN COVER AROUND ALL OPENINGS, 3-#4 REBARS IN EACH CORNER. CONDUITS SHALL NOT PROJECT MORE THAN 2" ABOVE FOUNDATION.



Barton & Loguidice		41 Sequin Drive Glastonbury, CT 06033 Phone: (860) 633-9770 Fax: (860) 633-5971 www.bandct.com	
Civil Engineering • Environmental Consulting • Land Surveying • Construction Management			
PROJ. ENGINEER	DPL	TRAFFIC CONTROL FOUNDATIONS PREPARED FOR TOWN OF CHESHIRE SIDEWALK RAMP IMPROVEMENTS	
PROJ. MANAGER	KRG		
OFFICE REVIEW	KRG		
REVISIONS		HIGHLAND AVENUE CHESHIRE, CT	
PROJECT	DATE	SHEET NO.	OF
3981-08	07/27/22	5	5
SCALE:	NOT TO SCALE		



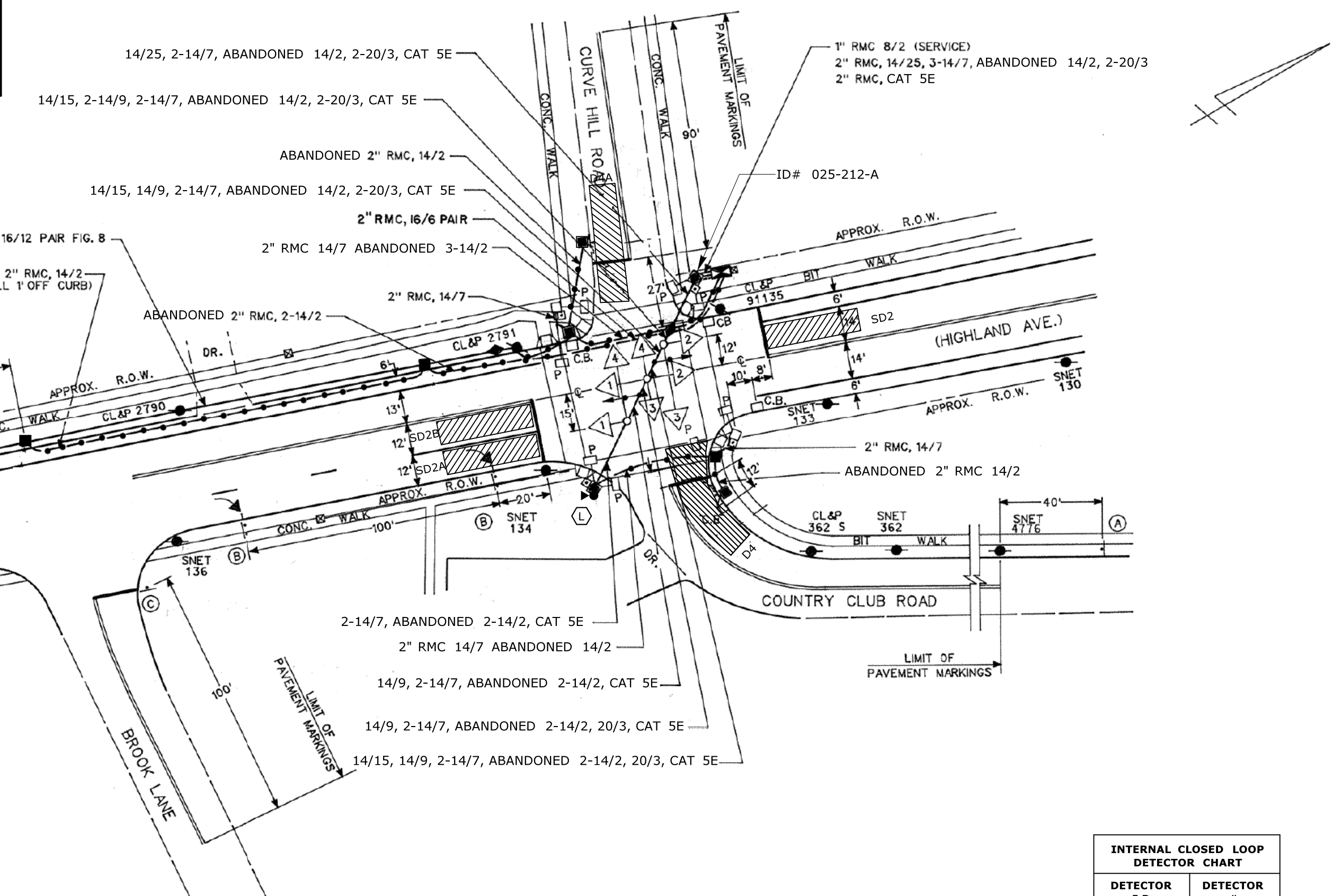
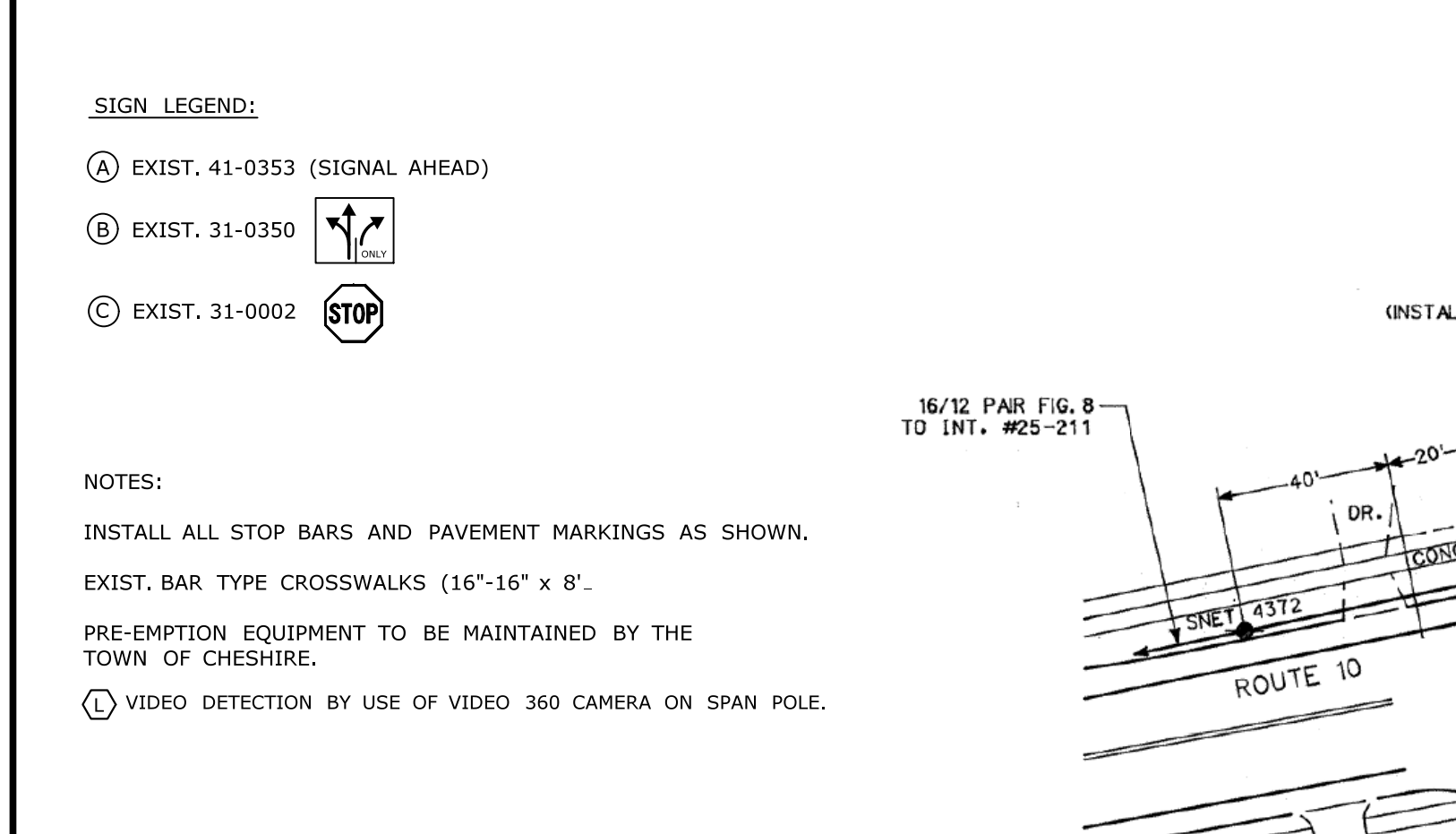
TECHNICAL NOTES		OFFICE RECORD	
STANDARD OVERLAP SKIP FEATURES APPLY		REV #9	TIR # N/A SM # 101166 SIGNAL REVISED: 10-19-2017
TIMINGS SHOWN REFLECT FREE OPERATION.		REV #10	TIR # N/A SM # N/A SIGNAL REVISED: 11/05/2020
ACTUAL COORDINATION INFORMATION TO BE DETERMINED BY THE CLOSED LOOP LOCAL COORDINATION UNIT.		REV #11	TIR # N/A SM # N/A SIGNAL REVISED: 02/21/2022
PRE-EMPTION TO BE INOPERATIVE DURING FLASHING OPERATION.		TRAFFIC & ELECT. DES: TRAFFIC SIGNALS UNIT	
		REVISED PEDESTRIAN SIGNAL INDICATIONS UNDER PROJECT 0171-0449.	



PRE-EMPTION SETTINGS

	PRE-EMPT 1
PRIORITY	NO
DET. LOCK	YES
DELAY	0
ALT. MIN. GRN	5
ALT. YELLOW	PARENT
ALT. RED	PARENT
ALT. PED. CLR.	11
HOLD GREEN	15
HOLD YELLOW	4.8
HOLD RED	1.4
HOLD PHASE	2
EXIT PHASE	4
EXIT CALL	NONE

IDENT	DETECTORS			SYSTEM LOC	COORDINATION TYPE: CLOSED LOOP						
	SIZE (WXL)	TYPE	MODE		MASTER	PROGRAM	FUNCTION	TIME	DAYS	CYCLE	OFFSET
D4	SEE PLAN	VIDEO 360	PRESENCE	025-201	025-211	FLASH	2200-0700	DAILY			
D4A	11' X 47'	VIDEO 360	PRESENCE	025-222	025-212						
SD2	9' X 37'	VIDEO 360	PRESENCE	025-231	025-233						
SD2A	9' X 37'	VIDEO 360	PRESENCE	025-202	025-218						
SD2B	9' X 37'	VIDEO 360	PRESENCE	025-224	025-236						



SPAN POLE INFORMATION

ID #	POLE LENGTH	BOLT CIRCLE	LOAD AT YIELD	YEAR INSTALLED
ID# 025-212-A	28'	20"	6100 lbs.	1995
ID# 025-212-B	28'	20"	6100 lbs.	1995

FOR REV # 10:
Tighe & Bond
 www.tighebond.com
 213 Court Street
 Suite 1100
 Middletown, CT 06457
 (860) 704-4760

Dana C Huff
I agree to the specified portions of this document
2017.05.30
14:59:48 -04'00'

INTERNAL CLOSED LOOP DETECTOR CHART

DETECTOR I.D.	DETECTOR #
D4	20
D4A	25
SD2	26
SD2A	27
SD2B	28

ENGINEER	TRAFFIC	DATE	ELECTRICAL	DATE	REV #11	INTERSECTION # 025-212
DRAWN BY					ENERGY BY - TOWN	ADDRESS #
CHECKED BY					MAINT LEVEL 5	SERVICE POLE - CL&P 2791
SUBMITTED BY						UNMETERED SERVICE
APPROVED BY						
APPROVED DATE						

NO.	DATE	REVISION DESCRIPTION

LEGEND:

- R RED
- Y YELLOW
- G GREEN
- ←R RED ARROW
- ←Y YELLOW ARROW
- ←G GREEN ARROW
- WØ WALK/ PED. CLR
- D.W. DON'T WALK
- FL. FLASHING

- PROPOSED WOOD SPAN POLE
- EXISTING WOOD SPAN POLE
- PROPOSED STEEL SPAN POLE
- ⊙ EXISTING STEEL SPAN POLE
- PROPOSED UTILITY POLE
- EXISTING UTILITY POLE
- PEDESTAL MOUNTING
- ⊞ PEDESTRIAN PUSH BUTTON & SIGN
- ⊞ DIRECTIONAL ARW. FOR PUSH BUTTON

- ⊞ TRAFFIC SIGNAL FACE
- ⊞ PEDESTRIAN SIGNAL FACE
- ⊞ DET. LEADS IN SAW CUT
- ⊞ PROPOSED RMC (RIGID METAL CONDUIT)
- ⊞ EXISTING RMC (RIGID METAL CONDUIT)
- ⊞ AUXILIARY TERMINATION CABINET
- ⊞ AUXILIARY EQUIPMENT CABINET
- ⊞ VIDEO DETECTION ZONE

- ⊞ SIDEWALK RAMP
- ⊞ CABLE CLOSURE
- ⊞ WIRELESS SENSOR
- ⊞ WIRELESS RECEIVER
- ⊞ WIRELESS TRANSMITTER
- ⊞ GUY WIRE
- ⊞ PROPOSED HANDHOLE
- ⊞ EXISTING HANDHOLE

STATE OF CONNECTICUT
DEPARTMENT OF TRANSPORTATION

ROUTE 10 (HIGHLAND AVE)
AT COUNTRY CLUB RD & CURVE HILL RD

TOWN: CHESHIRE
PROJECT NO. 0171-0449
DRAWING NO. TRAFFIC CONTROL SIGNAL PLAN
SHEET NO.

DATE PLOTTED : 3/30/2022 D:\Users\snettleton\State of Connecticut\0171-0449 - As-Built\CDN\Cheshire\025-212\011_TR_ASSET_025_212.dgn

SCALE 1" = 40'